

Fig.2-1: Fort Pearce Wash Watershed - 10 Digit HUCs

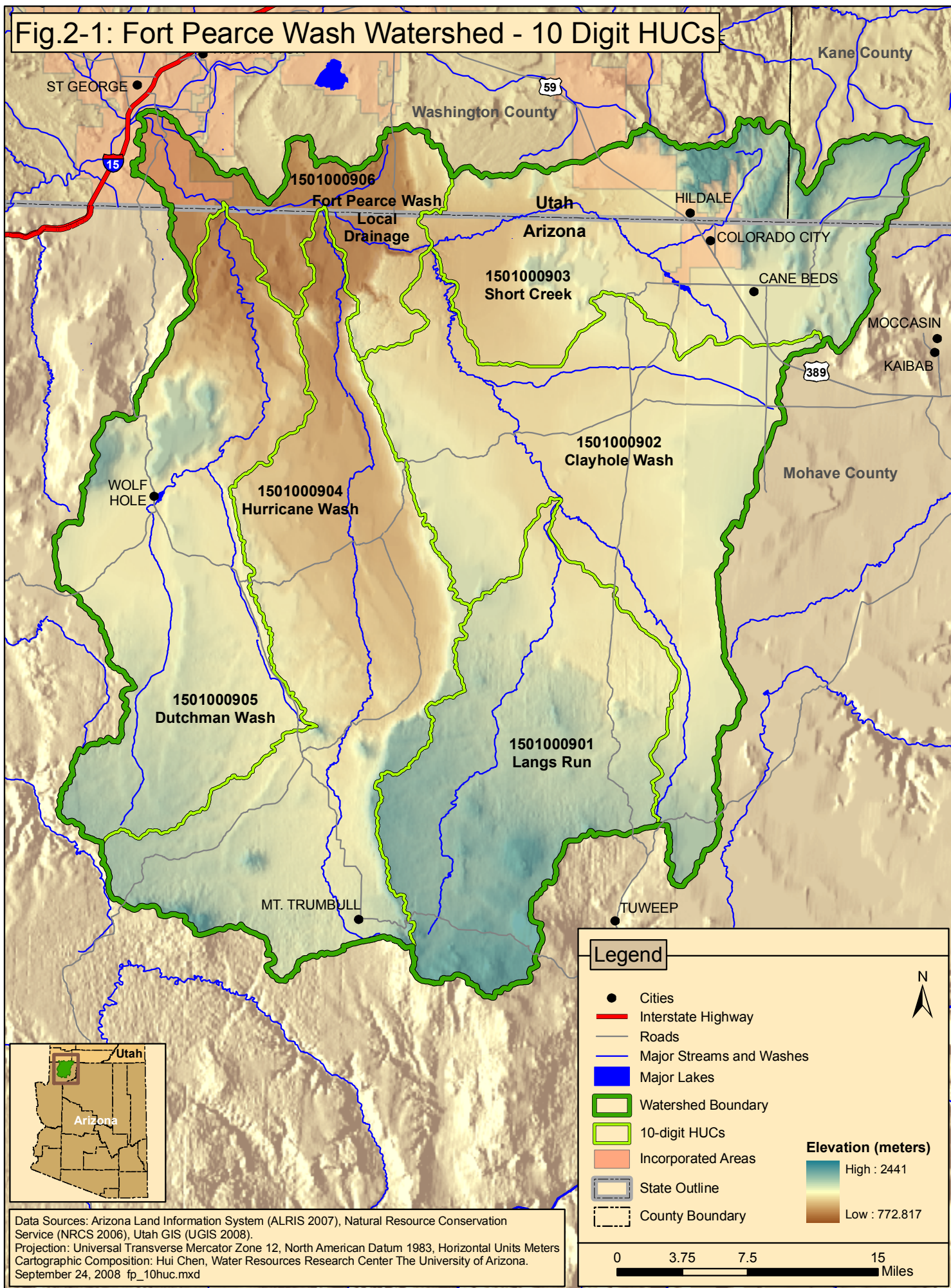


Fig.3-1: Fort Pearce Wash Watershed Impaired Streams and Lakes and Active Management Areas

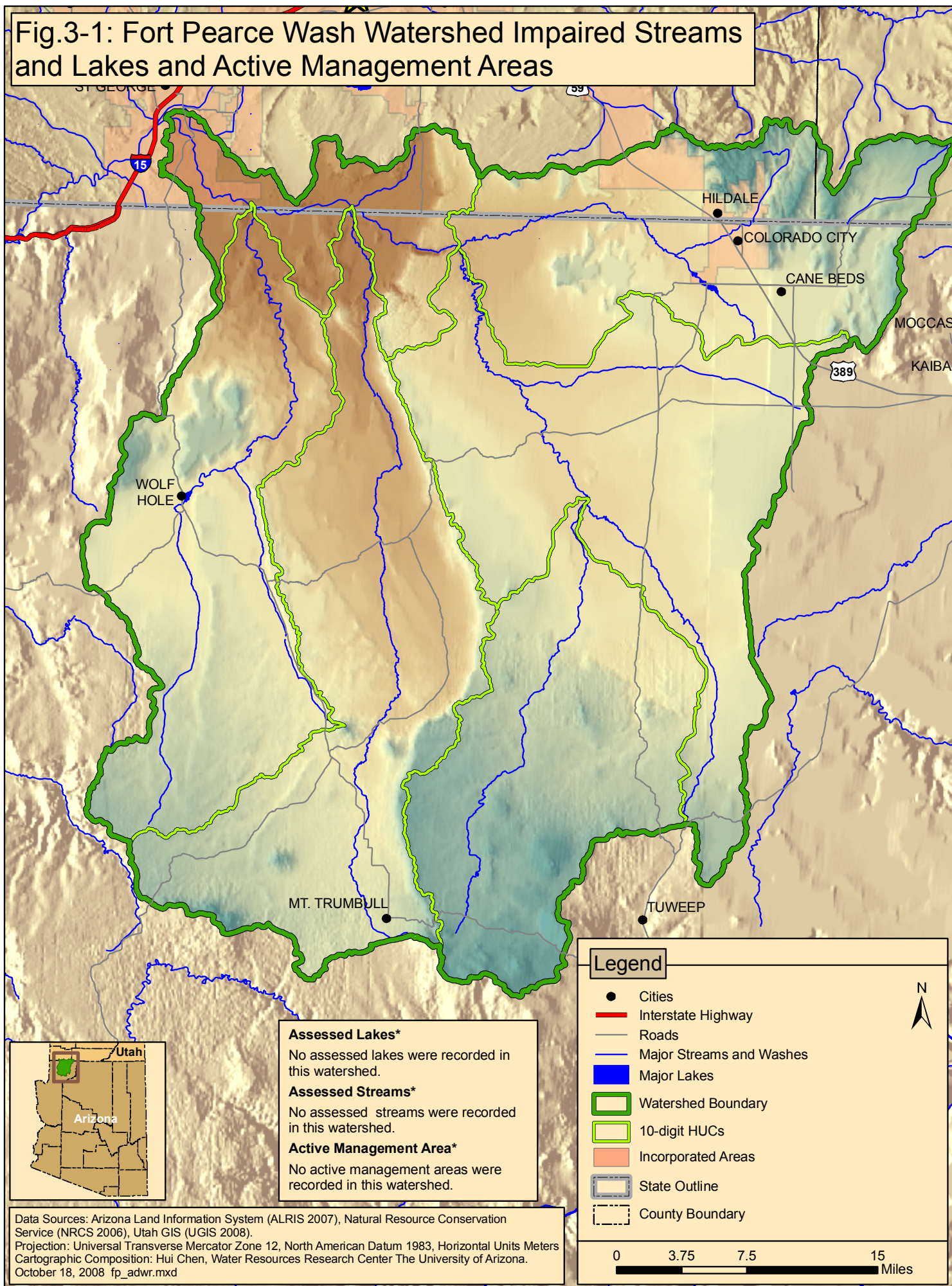


Fig.2-3: Fort Pearce Wash Watershed Common Resource Areas

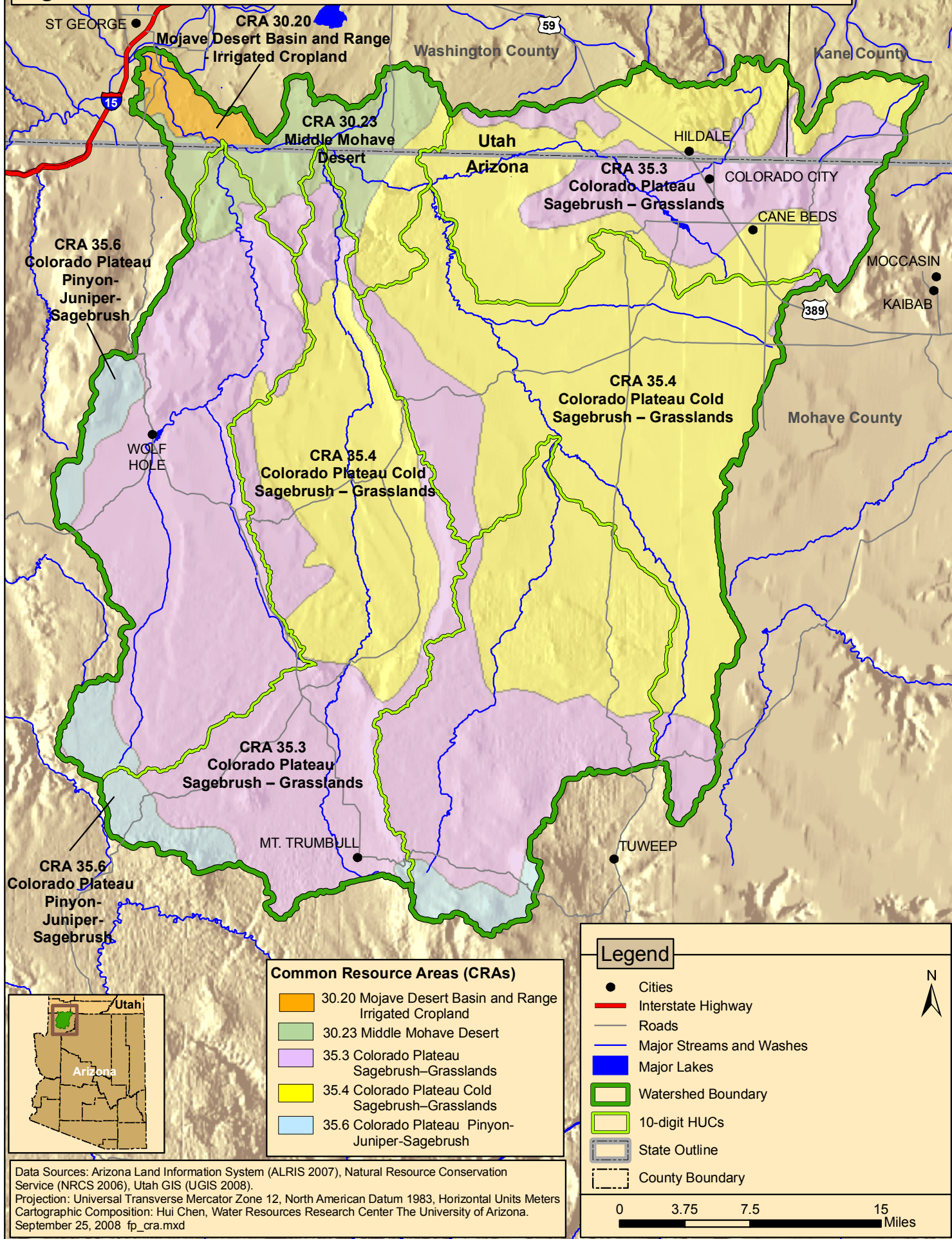


Fig.3-3: Fort Pearce Wash Watershed Environmental Sites

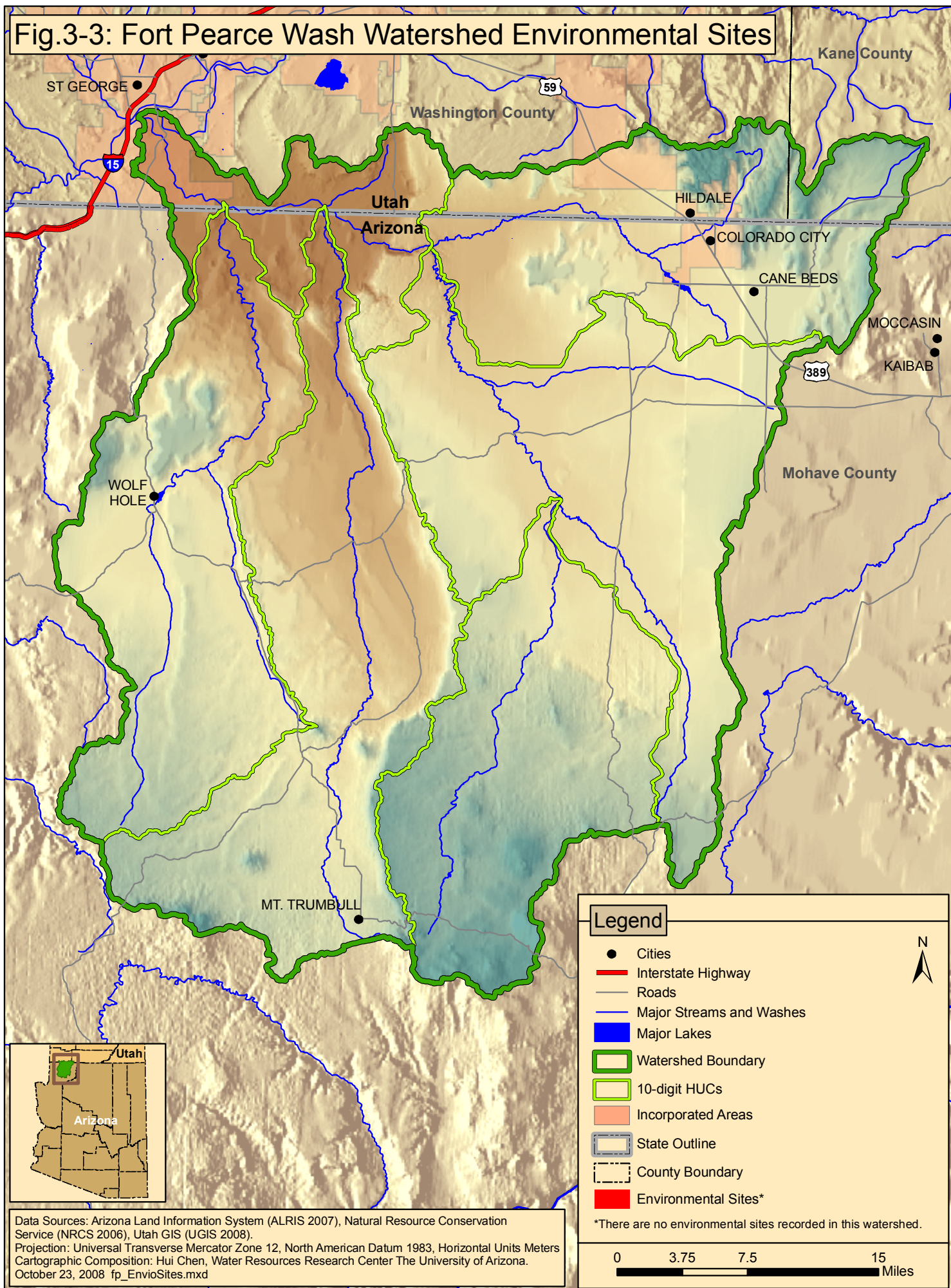


Fig.2-7: Fort Pearce Wash Watershed Land Cover / Vegetation

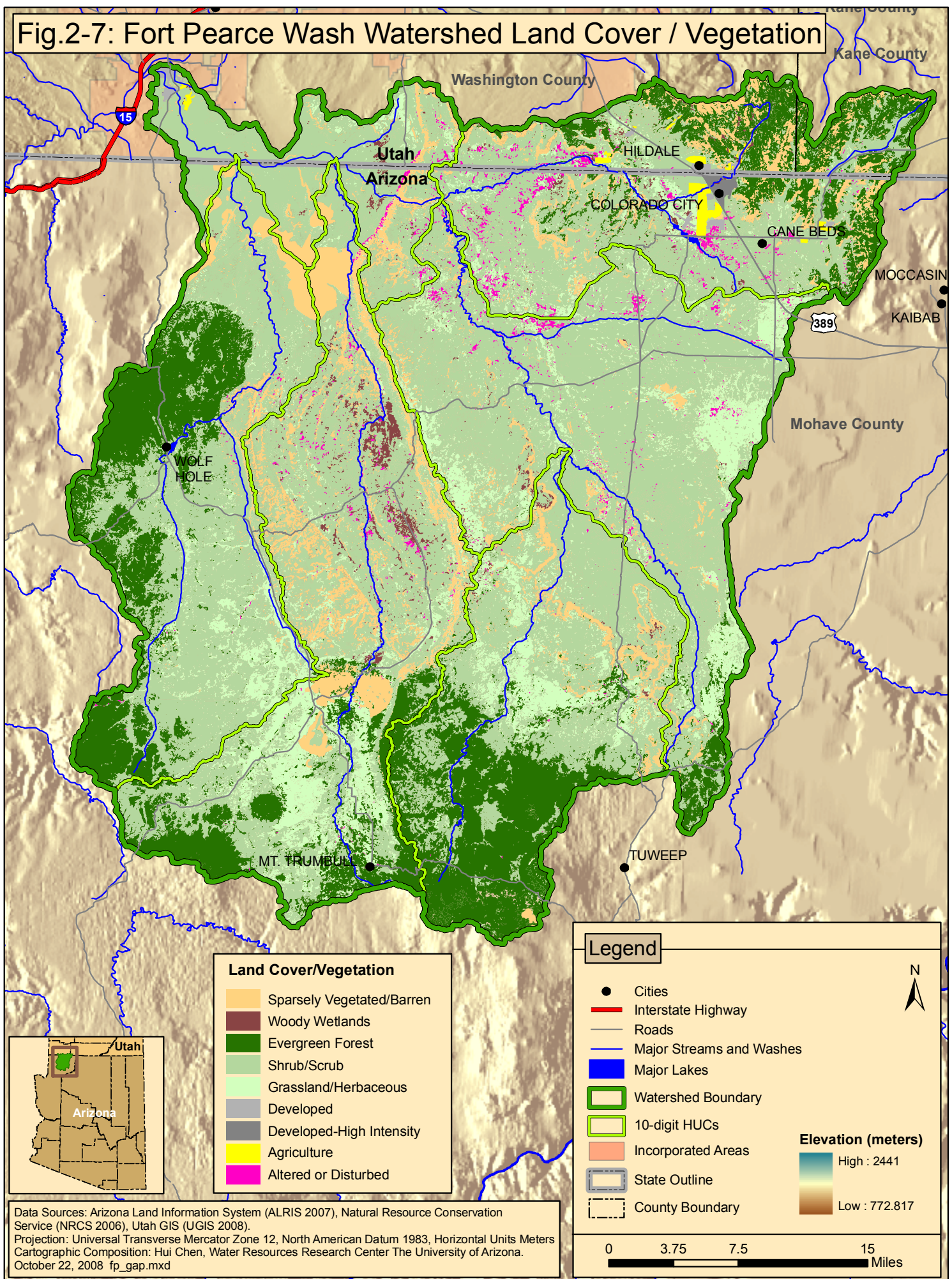


Fig.2-2: Fort Pearce Wash Watershed Geology

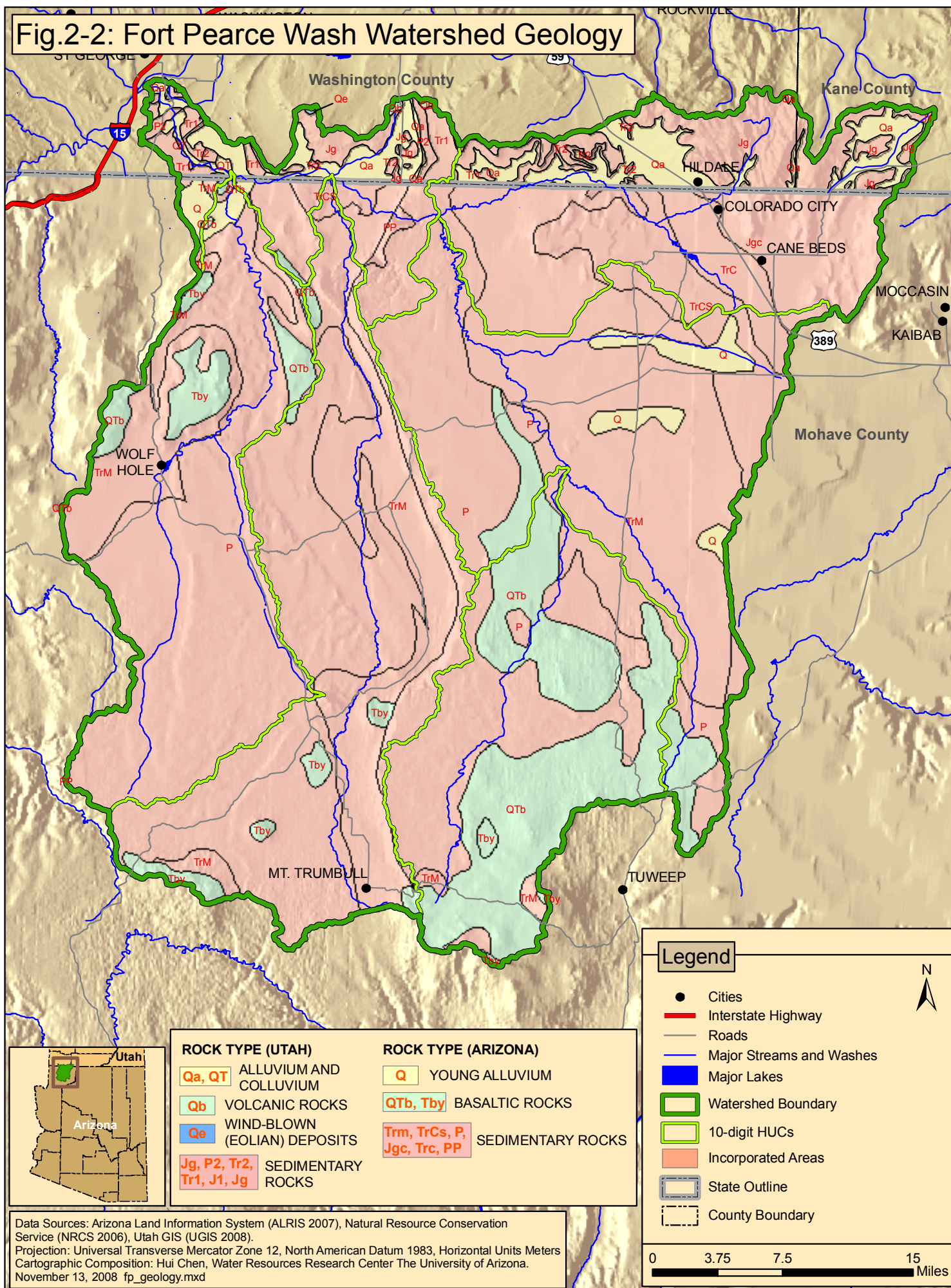


Fig. 4-4: Fort Pearce Wash Watershed Housing Density, 2000

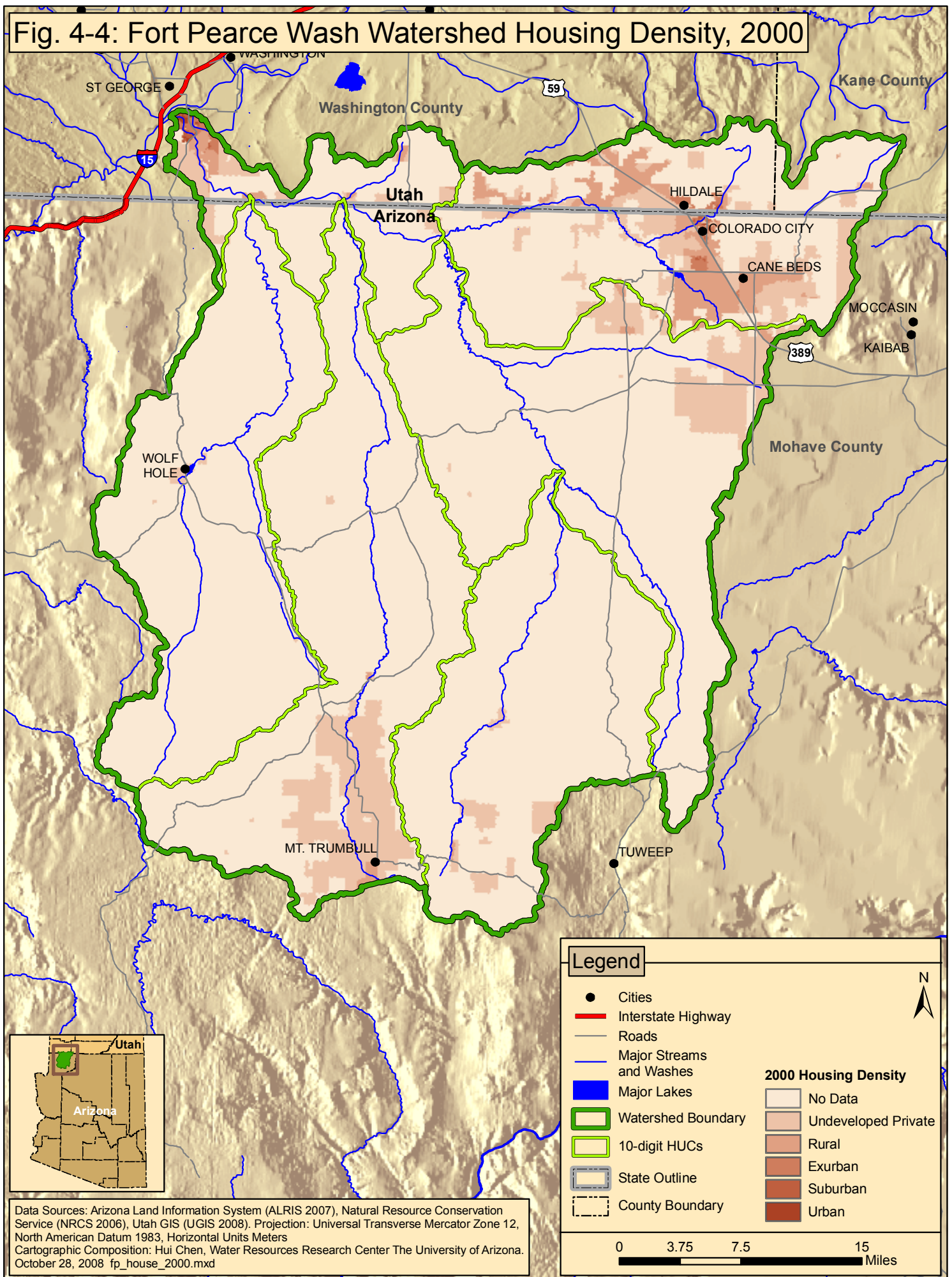


Fig. 4-5: Fort Pearce Wash Watershed Housing Density, 2030

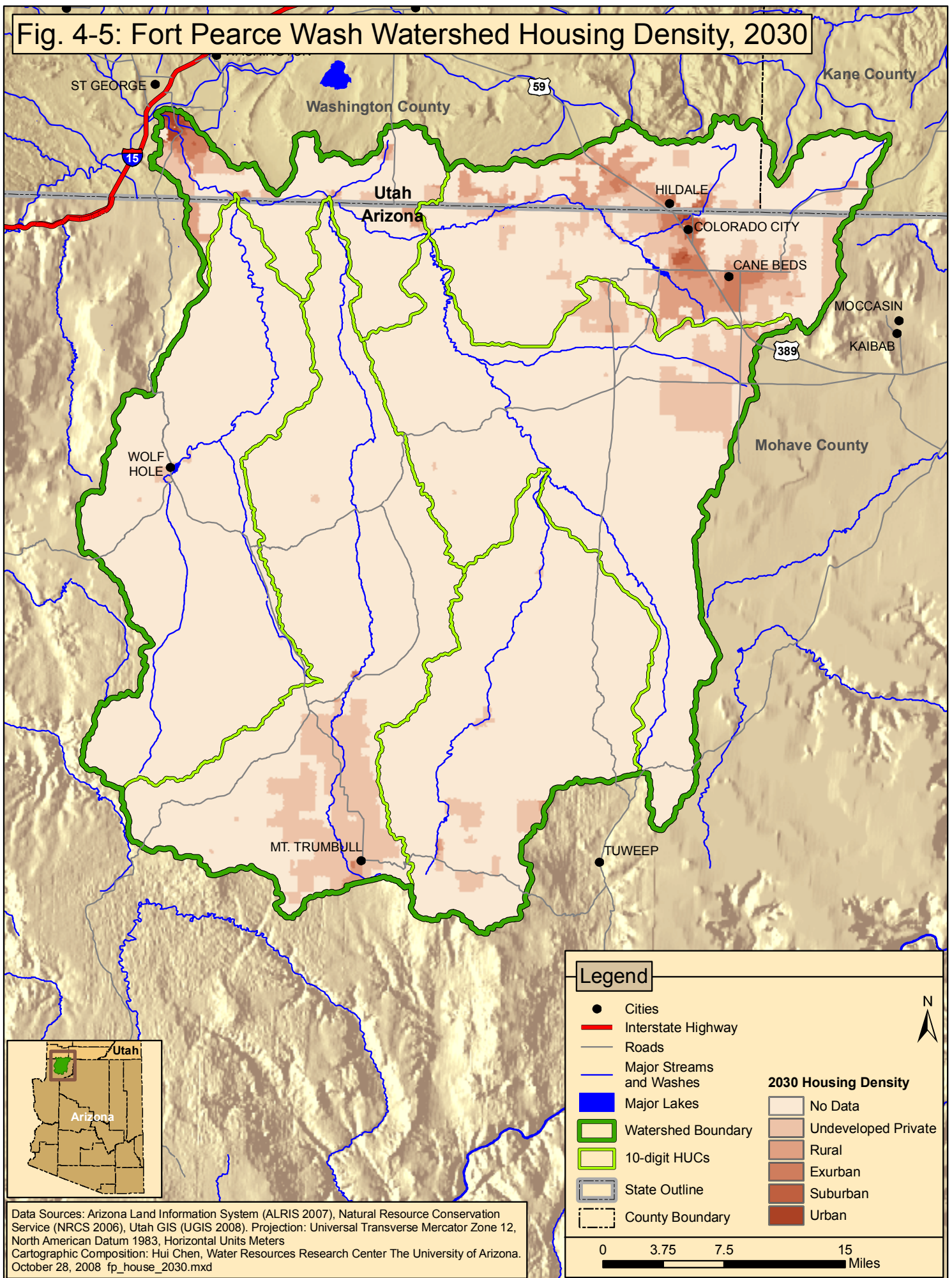


Fig.2-10: Fort Pearce Wash Watershed Land Use

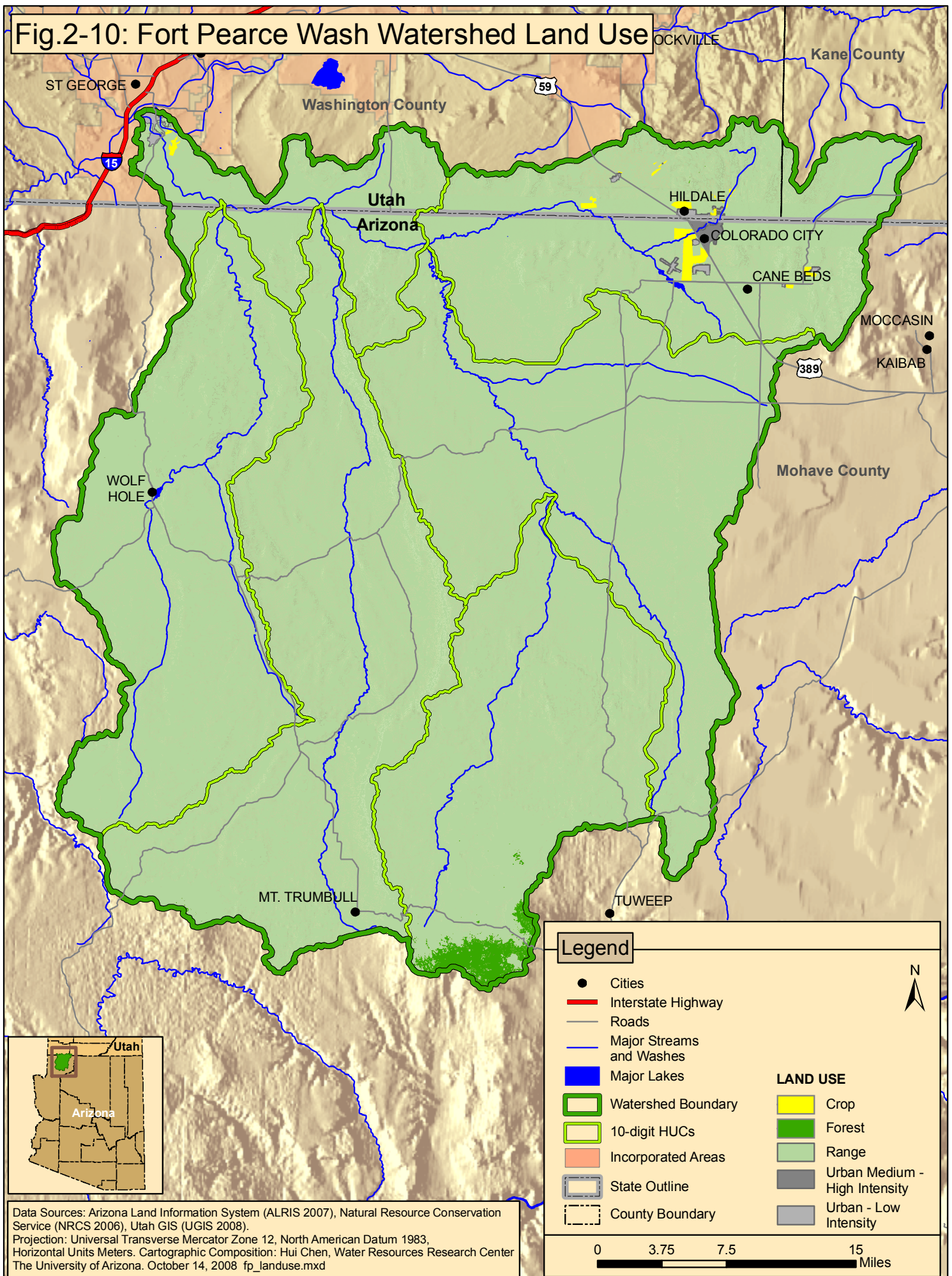
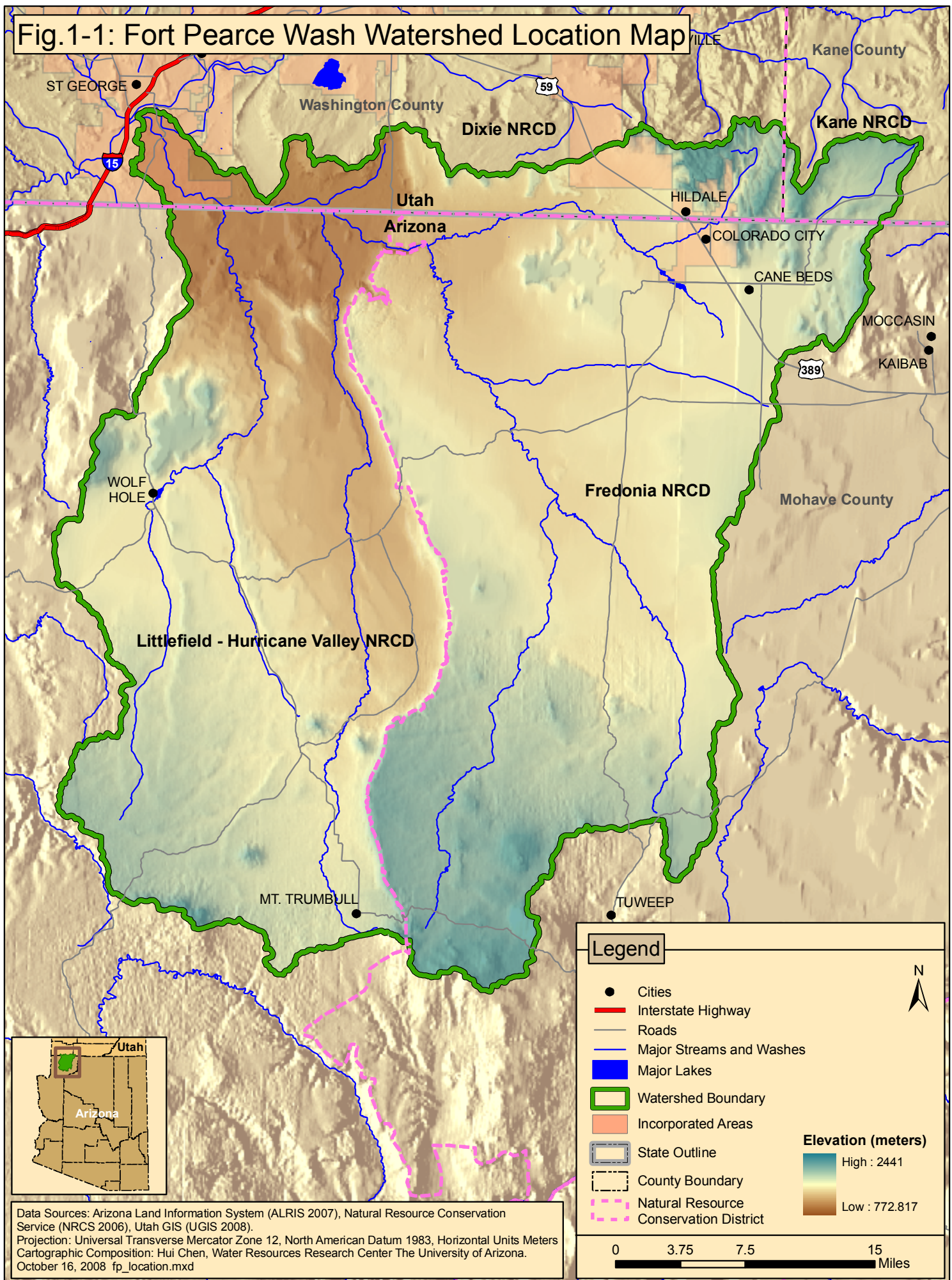


Fig.1-1: Fort Pearce Wash Watershed Location Map



Data Sources: Arizona Land Information System (ALRIS 2007), Natural Resource Conservation Service (NRCS 2006), Utah GIS (UGIS 2008).
 Projection: Universal Transverse Mercator Zone 12, North American Datum 1983, Horizontal Units Meters
 Cartographic Composition: Hui Chen, Water Resources Research Center The University of Arizona.
 October 16, 2008 fp_location.mxd

Fig.2-11: Fort Pearce Wash Watershed Primary Ores



Fig.2-9: Fort Pearce Wash Watershed Land Ownership

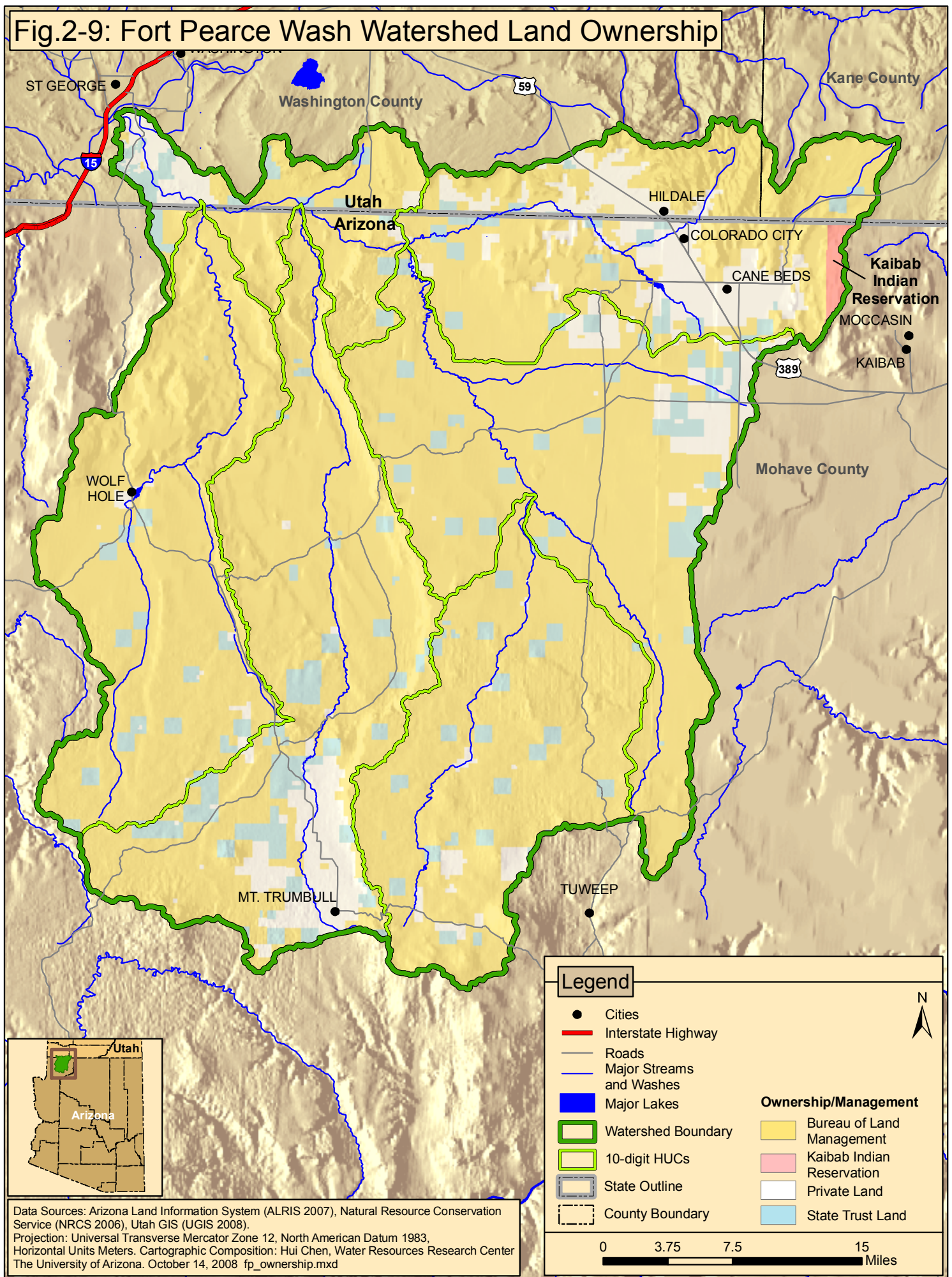


Fig. 3-2: Fort Pierce Wash Watershed Air Quality

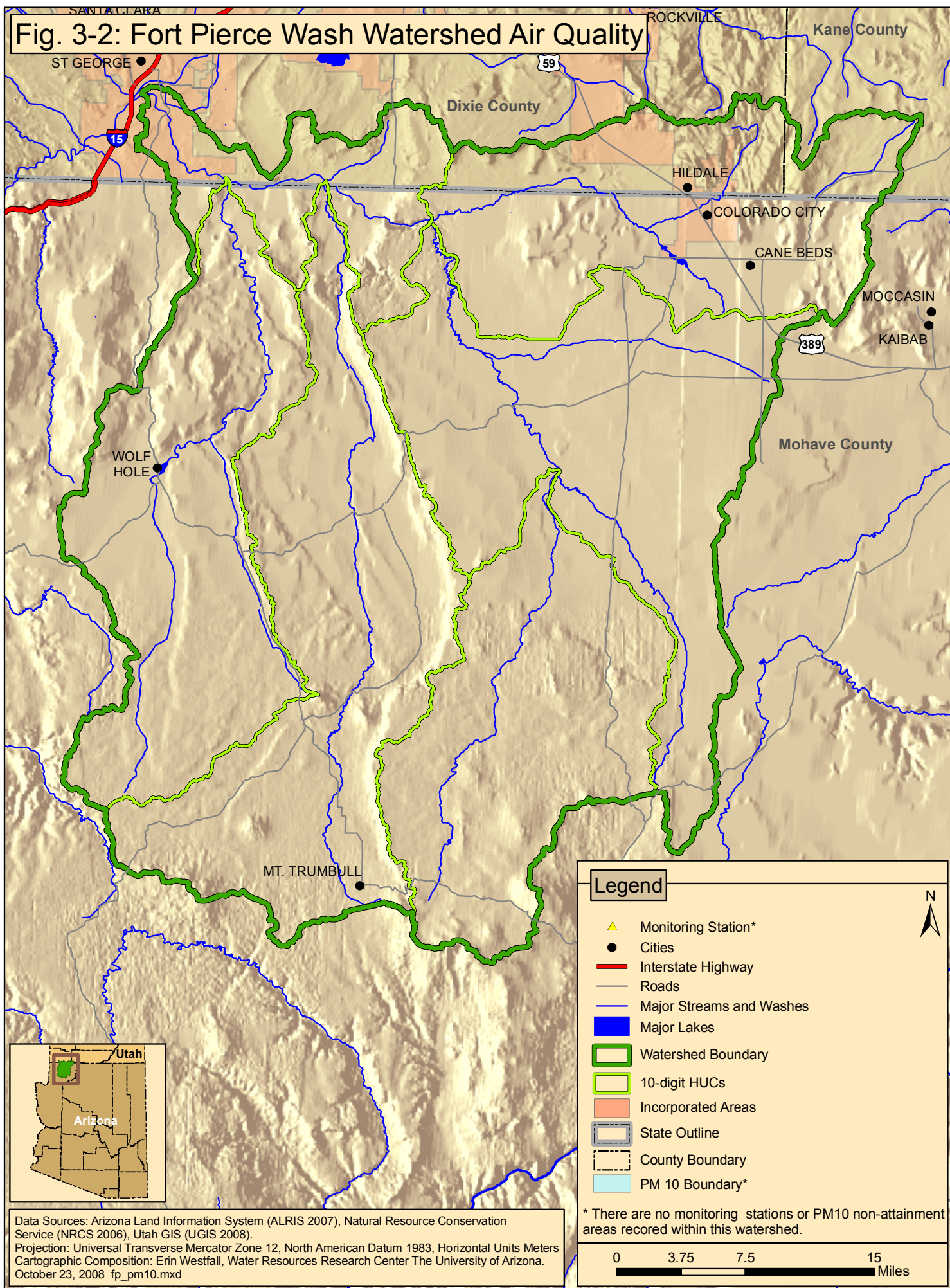


Fig.4-1: Fort Pearce Wash Watershed Population Density, 1990

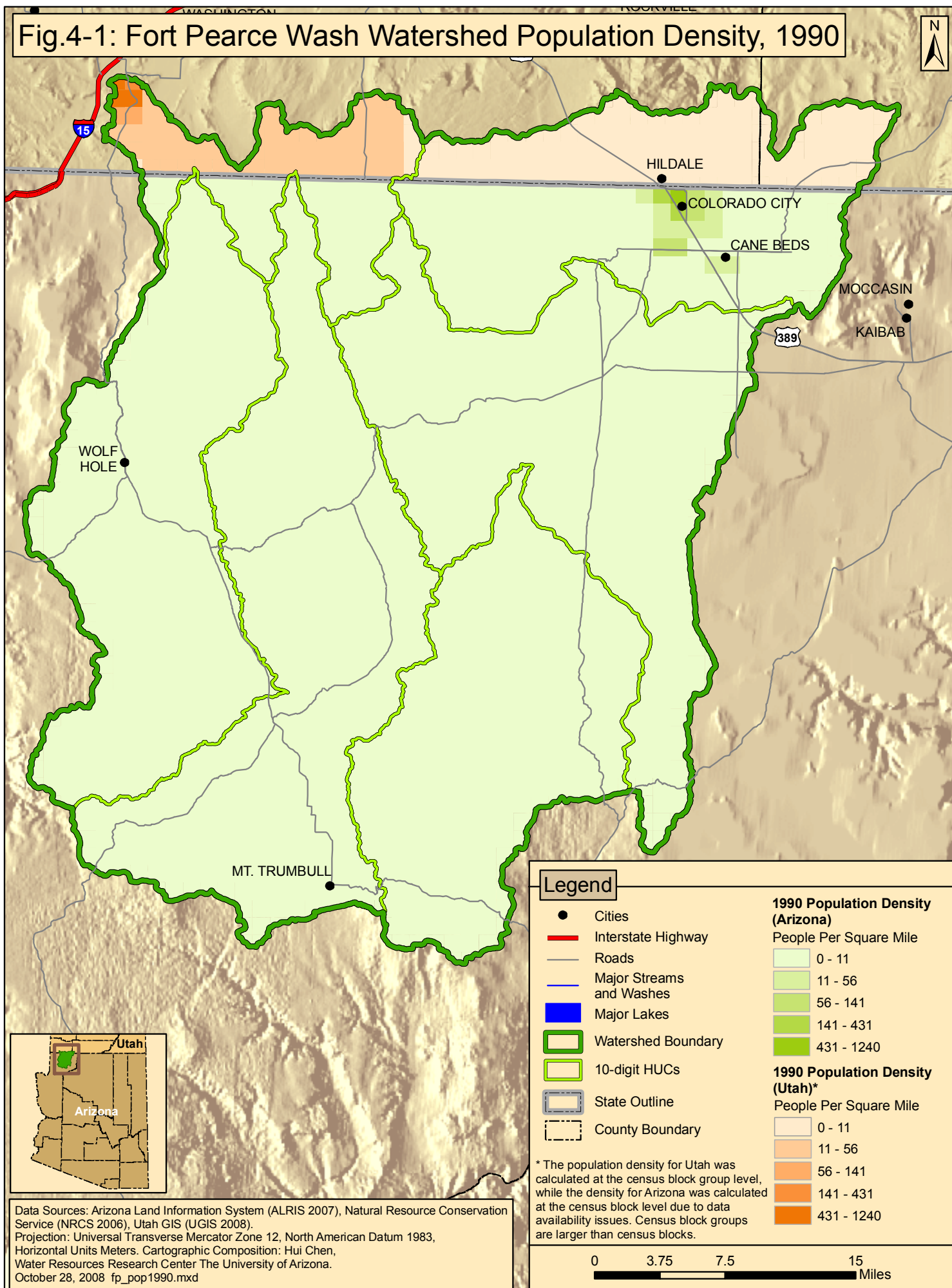


Fig.4-2: Fort Pearce Wash Watershed Population Density, 2000

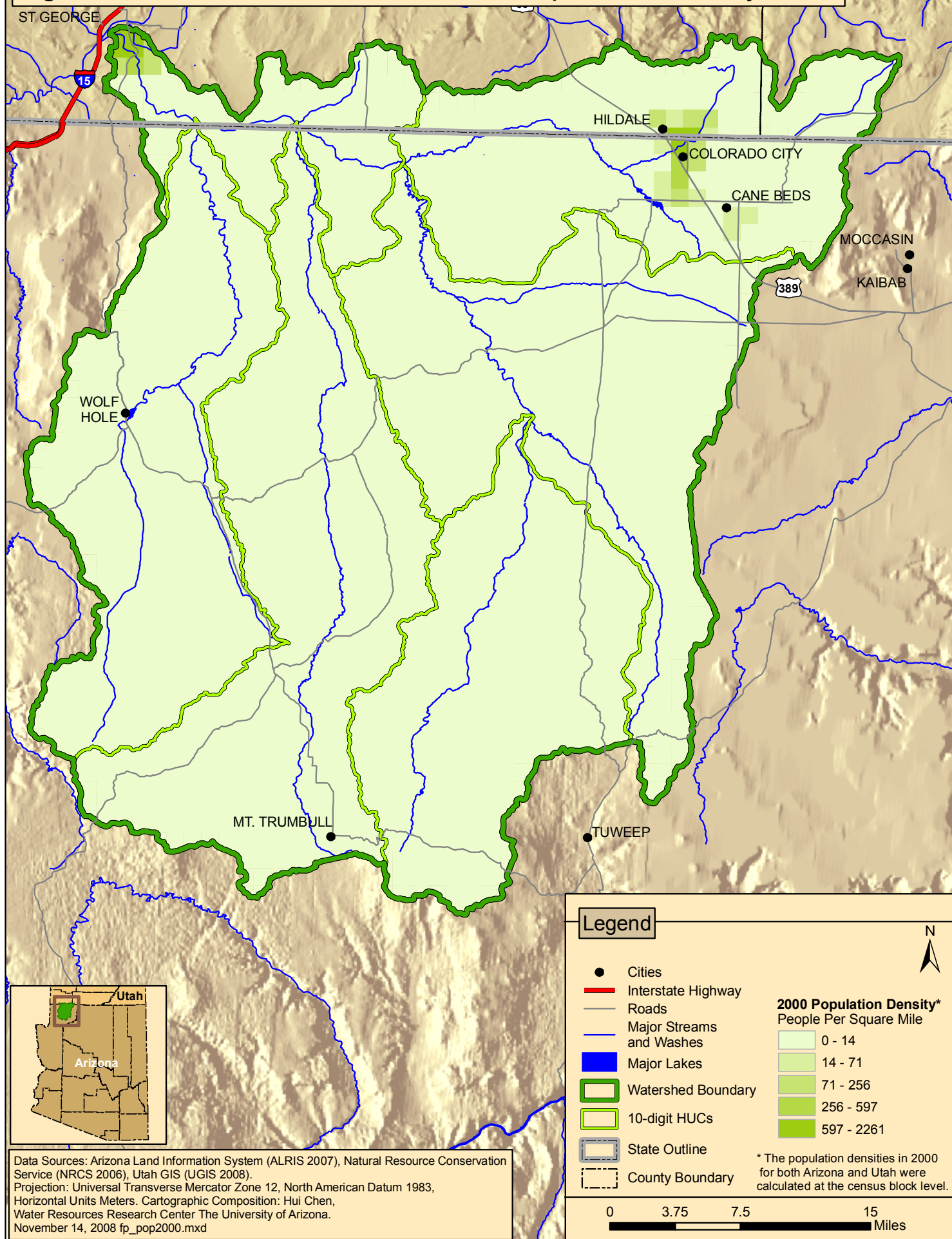


Fig.4-3: Fort Pearce Wash Watershed Change in Population Density, 1990 - 2000

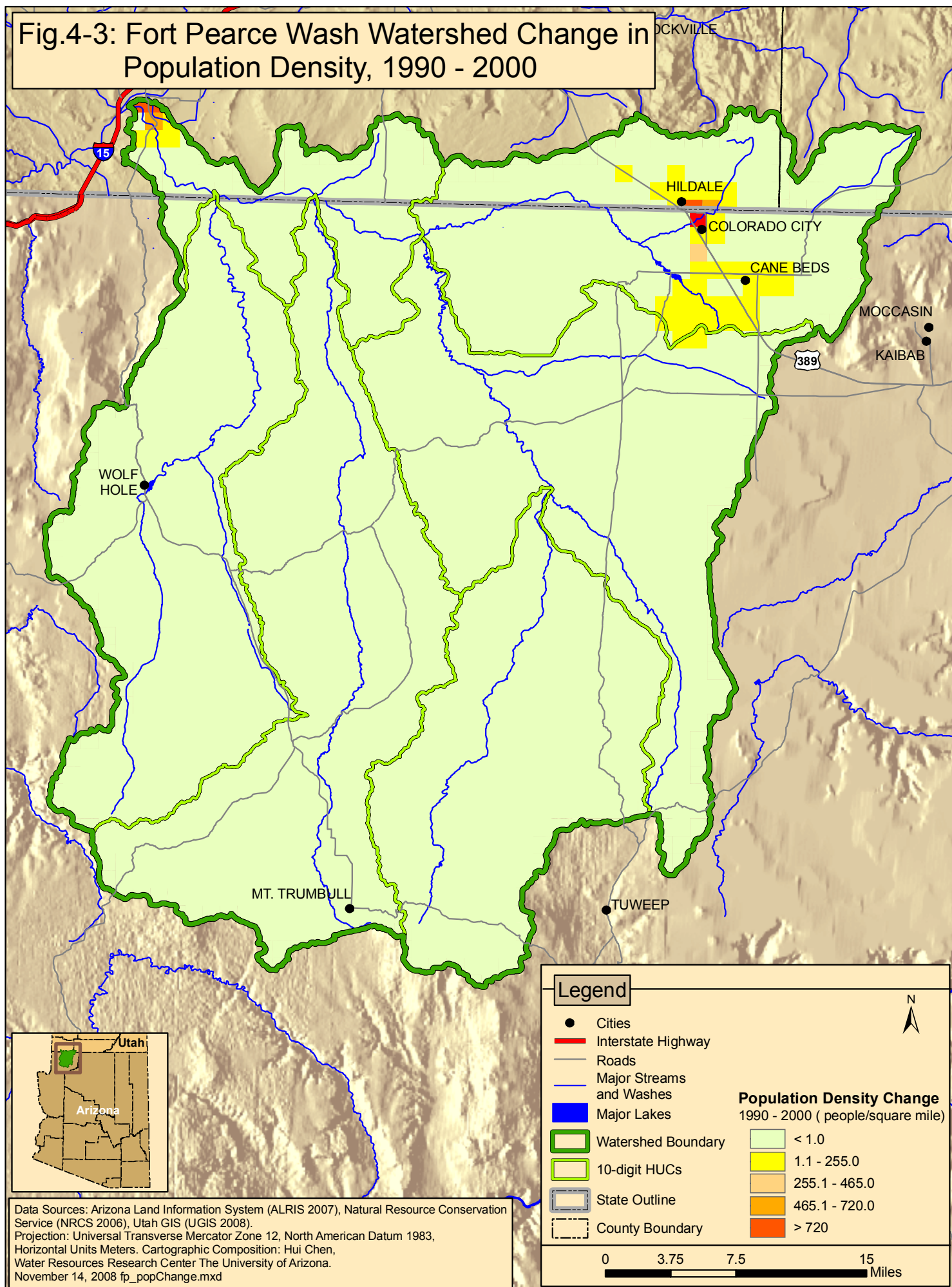


Fig.2-8: Fort Pearce Wash Watershed Average Annual Precipitation and Meteorological Stations

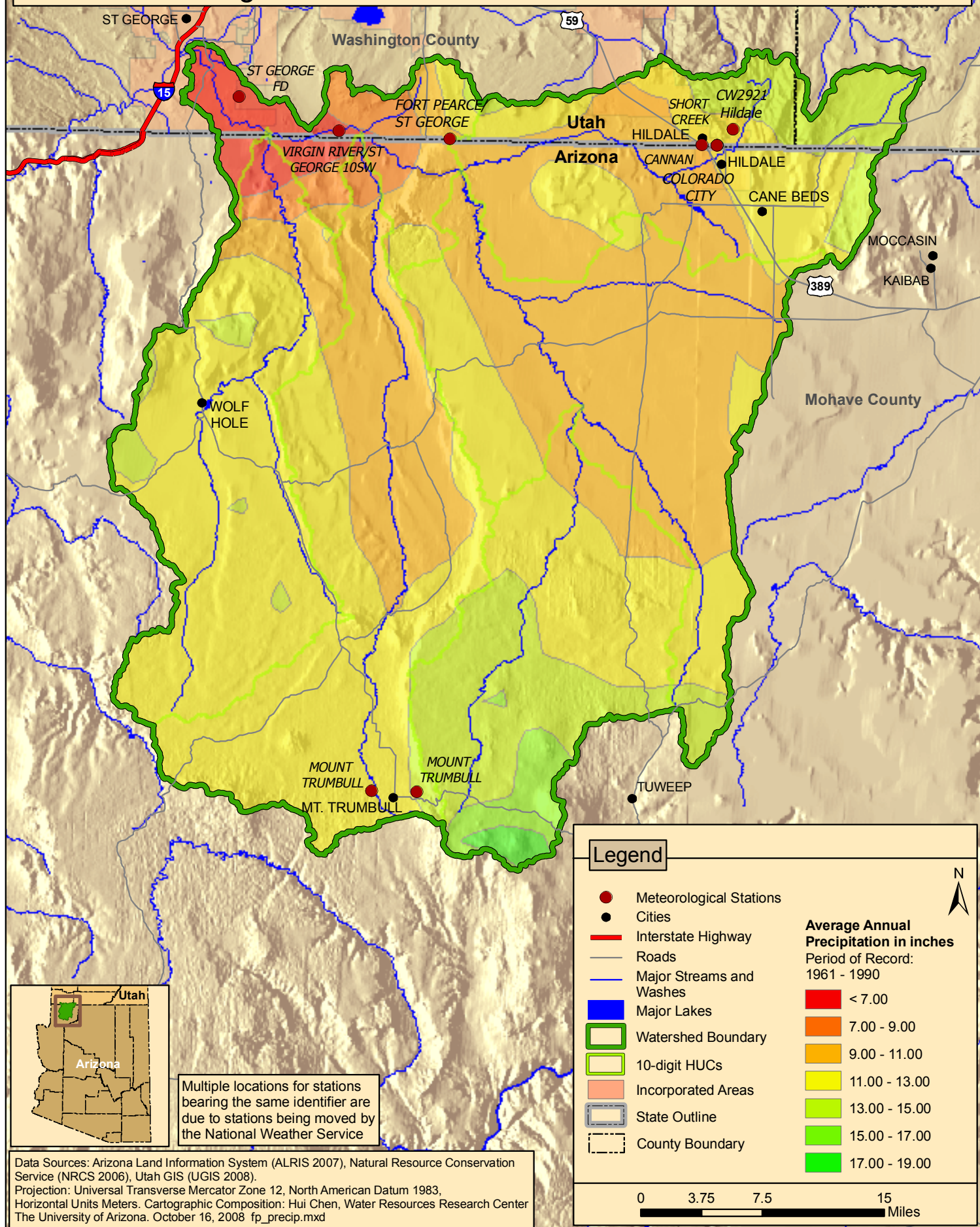


Fig.2-6: Fort Pearce Wash Watershed Riparian Vegetation

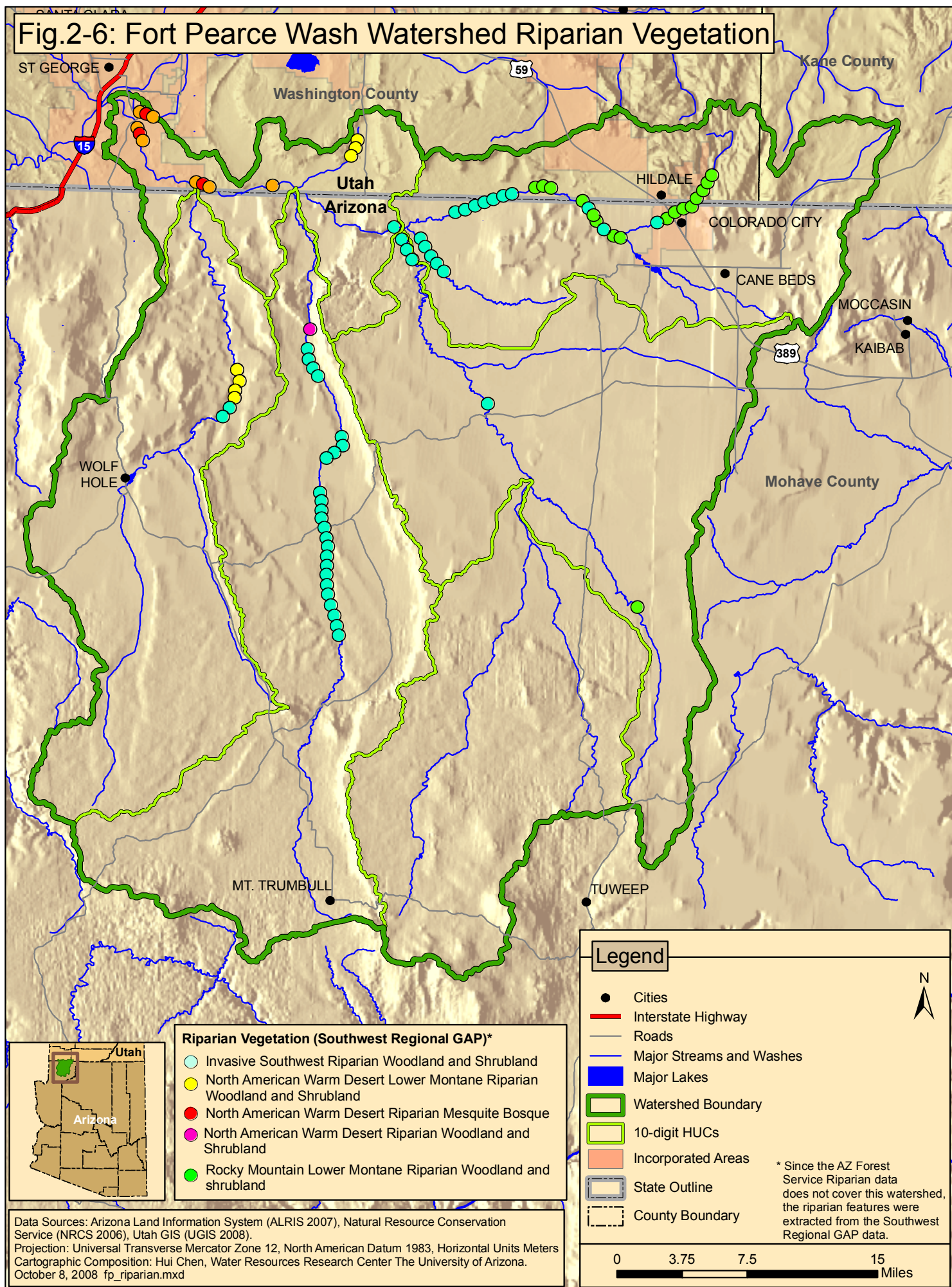


Fig.2-4: Fort Pearce Wash Watershed Slope Classifications

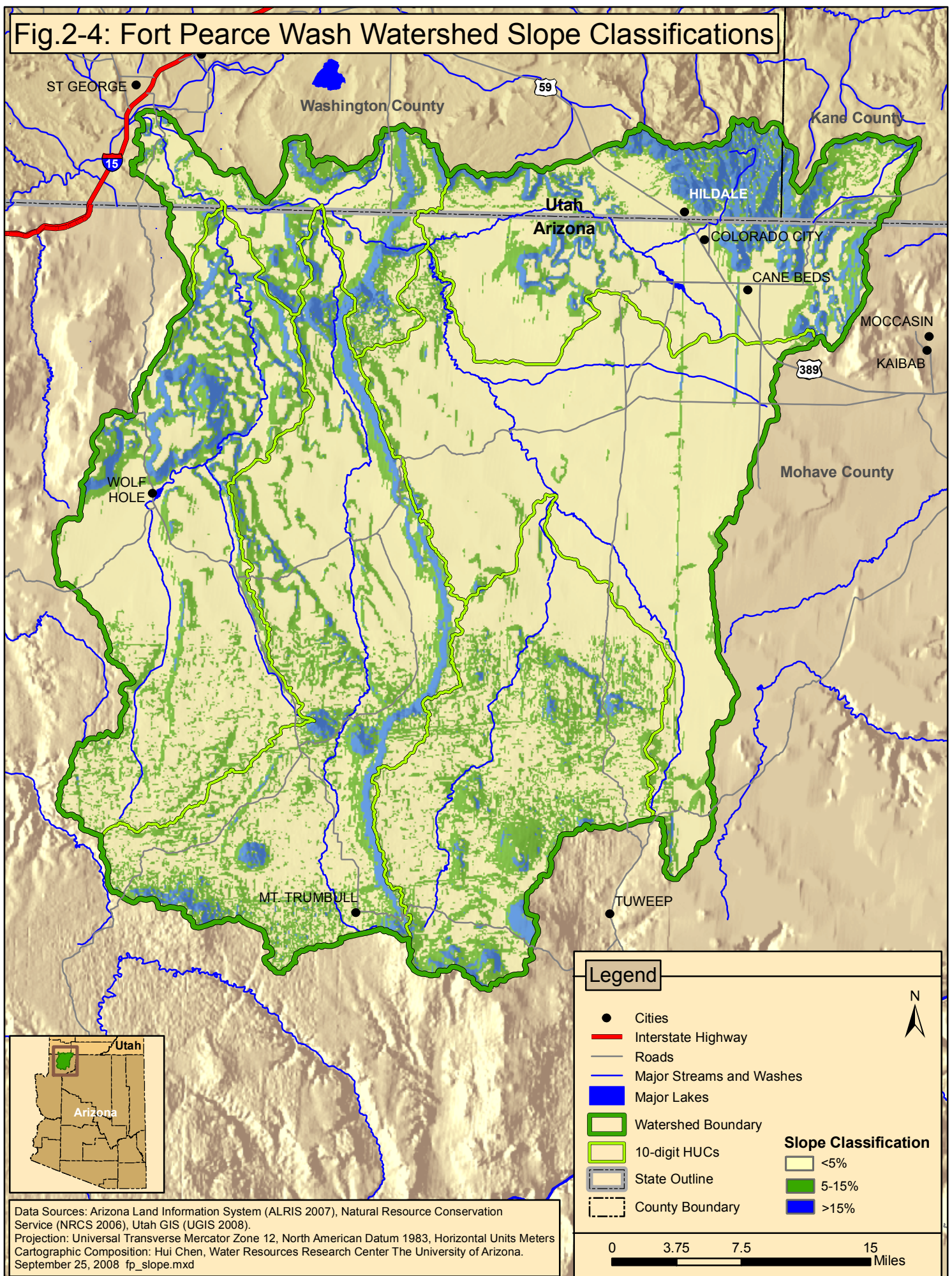


Fig.2-5: Fort Pearce Wash Watershed Streams, Canals, and Lakes

