

MISCELLANEOUS RING RECORDS. I.

EDMUND SCHULMAN

With this note we begin a series in which the dating of isolated specimens and smaller collections will be reported in tabular form. As in the areal reports on the climatic-archaeological collections in the *Bulletin* (vol. 12, no. 3, Jan. 1946, *et seq.*) dates will be supported by the ring-width measurements, plotted in parallel with published master indices whenever possible. It is planned to incorporate many of these scattered sequences into established master indices, or, if they represent entirely new localities, in new climatic chronologies, when sufficient supplementary data become available.

Table 1. Dated Specimens<sup>1</sup>

Specimen No.	Site	Form	Species	Mean Ring-Width, mm.	Plot Scale	Inner Ring, A.D.	Outer Ring, A.D.
Southeastern Utah							
DWR-3 <sup>2</sup>	Nat. Bridges Area	frag.	DF	0.39	2	449	675 vv
DWR-5 <sup>3</sup>	Butler Wash	sec.	PNN	0.51	1	1131 p	1250 b
Flagstaff Area, Northern Arizona							
11/212 <sup>4</sup>	NA-739C	slab	CBS	0.75	1	1071	1256
F-5472 <sup>5</sup>	NA-1814E	ch. ½ sec.	PP	0.35	2	1045 p	1135+vv

<sup>1</sup>See *Tree-Ring Bulletin* 15(4) for symbol code.

<sup>2</sup>Coll. by David W. Rial, Carnegie Museum, Pittsburgh, Pa., in 1945; Township 36S, Range 17E, Salt Lake Meridian.

<sup>3</sup>Coll. by Rial in 1948; Township 37S, Range 21E.

<sup>4</sup>Coll. by Nat. Park Service at Walnut Canyon ruin and submitted by Mus. No. Arizona for dating. Wood identifies as *Picea pungens*, not now growing in area. See description of NA-739A and 739B in H. S. Colton, *The Sinagua, Mus. No. Ariz. Bull.* 22, 1946.

<sup>5</sup>Coll. by Mus. No. Arizona in 1948

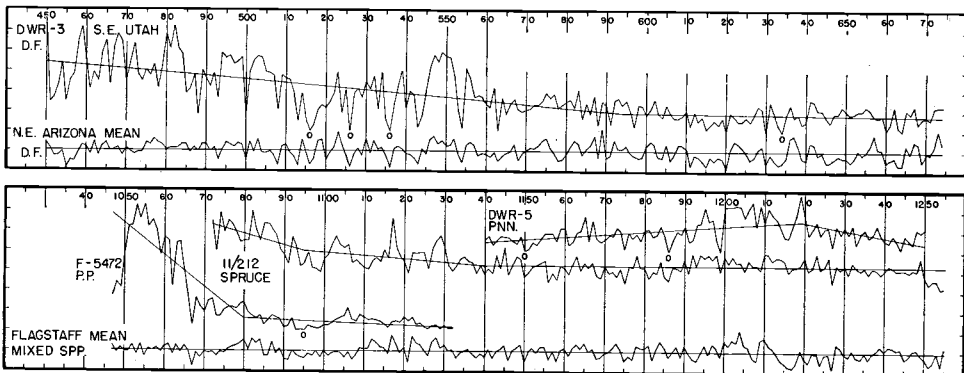


Fig. 1. Measured ring-widths in dated specimens. Zeros below the curves represent locally-absent rings; trend lines are superposed.