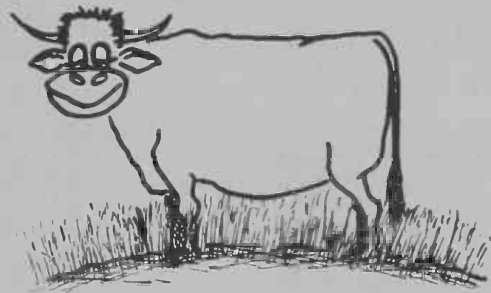


Range Condition Reported



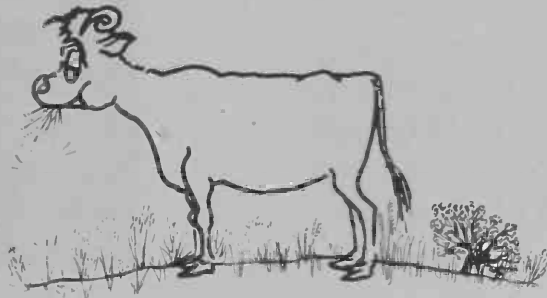
Excellent Condition Range

← 75 to 100% of possible forage production.



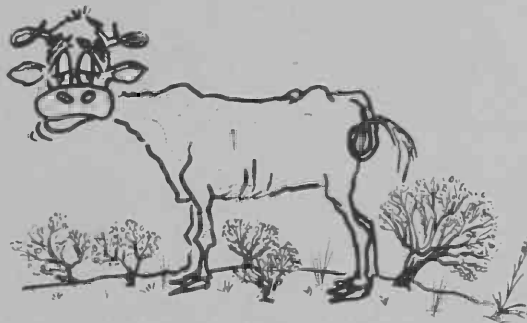
Good Condition Range

← 50 to 75% of possible forage production.



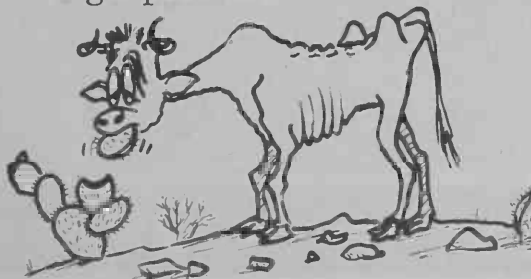
Fair Condition Range

← 25 to 50% of possible forage production.



Poor Condition Range

← 0 to 25% of possible forage production.



A knowledge of the condition of ranges in all sections of Arizona is important to stockmen and to Arizona's agriculture as a whole. A practical approach to the determination of range condition is necessary in good range management.

The University of Arizona College of Agriculture is engaged in preparing a series of range-condition bulletins that will ultimately cover all of the range counties of the state. Three of these have been completed — for Cochise, Yavapai and Mohave counties.

Work is currently under way on Coconino, Navajo, Apache, Pima and Santa Cruz counties. These current studies will be combined as two bulletins, one on the northern counties, the other on the southern.

The entire series of range-condition bulletins is being written to enable ranchers to determine the condition of their own ranches more accurately. Range condition is explained as a practical, dollars-and-cents approach to range improvement.

Ranges on which the carrying capacity is no more than 25 percent what it could be are classed as being in poor condition. Those producing from 25 to 50 percent of the possible amount are classed as fair. Those producing at from 50 to 75 percent of capacity are classed as good. Only when production is 75 percent or more of the potential is a range rated excellent.