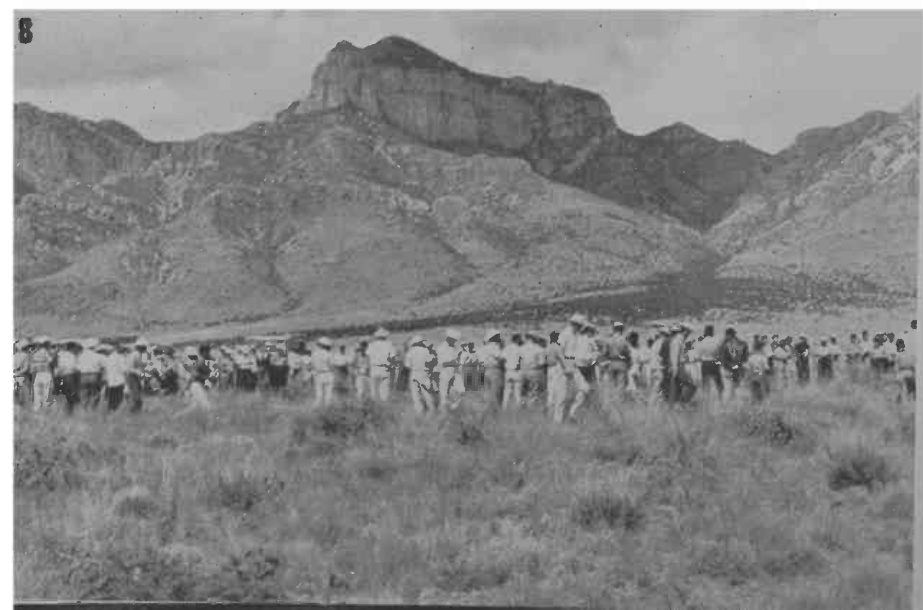


FIELD DAY



SOUTH OF THE BORDER





When "La Campana" range experiment station in the State of Chihuahua, Mexico, had its first field day, after three years of operation, more than 500 persons attended. The field day last Aug. 10 drew visitors from the Mexican states of Chihuahua, Sonora, Sinaloa, Nuevo Leon, Aguascalientes, Durango, Guanajuato, Veracruz, the Federal District, and from the U. S. states of Texas, New Mexico, Arizona and Colorado. The station, 50 miles north of Chihuahua City is operated under direction of the Oficina de Estudios Especiales, S.A.G., with cooperation of donors of the land, the Union Ganadera Regional de Chihuahua.

Shown in photos taken by a University of Arizona visitor:



1. An attractive sign at the gateway greets the visitor (and also explains the "S.A.G." in the paragraph above.)

2. People came in cars, in trucks, by horseback and motorcycle. Students in agriculture at Juarez, 180 miles north, chartered a bus; one Texan landed his plane on the highway near the roadway; students at Chihuahua colleges piled two and three persons on each of several motorcycles to ride the 50 miles to the station.

3. Whole families attended, and the lunch period was a grand fiesta as youngsters borrowed saddle horses for romps across the fields.

4. Live music during the lunch hour was furnished by a marimba band made up of federal soldiers.

5. Four leading participants, left to right, were Jesus Almeda, livestock grower and secretary of the Mexican Section, American Society of Range Management; Fred Kennedy, Albuquerque, president, American Society of Range Management; Ing. Martin H. Gonzalez, superintendent of the La Campana range research station and treasurer of the Mexican Section, American Society of Range Management, and Gilbert Valdes, president of the Mexican Section, American Society of Range Management.

6. The information crew, from the Oficina de Estudios Especiales of the Secretaria de Agricultura, Ganaderia y Recursos Forestales, left to right; Gil Olmos, in charge of making movies; Neil MacLellan, chief photographer; Ricardo Garza, researcher in forages; Dr. Delbert Myren, head of the information section, and Juan Zamora, cameraman.

7. Seven sheep and two fat calves had been killed and cut up the day before, so at noon the meat was roasted on large sheet iron grills placed on a foundation of adobe.

8. The well-grassed range below the mountains was a laboratory for discussion of range condition, range management, of nutritious and toxic plants.

9. Visitors, grouped in teams, were given small areas defined by binder twine, and score-cards on which each team evaluated range condition, names and value of plants in the area, methods by which that tiny fraction of range could be handled to improve its value.

10. One of the major discussions involved alfombrilla (carpet plant), a low-growing range weed invading many Chihuahua ranges, and highly toxic to livestock.

