

UA Gain-Test Station Enrolls 63 Young Bulls

Bruce Taylor

Nineteen Arizona breeders have enrolled 63 registered bulls in the first gain-test grading period at the Arizona Beef Cattle Improvement Station. During a period of 130 days, the bulls—all calved between December 1, 1960 and March 31, 1961—will be fed all they will eat of a growing ration. Graduation day for the bulls will be February 23, 1962.

All those that become approved Arizona tested-graded bulls on that date must have gained 2.3 pounds per day, acquired a 365-day weight of at least 825 pounds, and must grade choice or better. A number of those that pass all requirements will sell in an auction at the Beef Improvement Station, located in Tucson, Feb. 28, 1962. Those that do not meet the above requirements cannot be sold in the station sponsored sale.

Idea Took Shape Last Spring

Interest in such a station by Arizona breeders crystallized into activity June 1

The author is head of the Department of Animal Science.

and 2, 1961, at the Arizona Ranch School and Cattle Feeders' Day. The goal of approximately \$5000 needed to build the pens at the University's River Road Farm was over-subscribed by breeders, feeders, banks and commercial companies in less than 60 days.

Much credit for this fine record goes to the Arizona Cattle Growers' Association and its special committee, consisting of Steve Bixby of Globe, Henry Boice of Tucson, Ernest Browning of Willcox, and Ray Cowden and John Evans of Phoenix.

Mrs. Helen S. Corcoran of Tucson made it all possible by her gift to the University of a 44 acre well-improved farm at the corner of Dodge Boulevard and River Road in Tucson.

In August, those interested in using the station met and named committees necessary to operate the new facility designed to accurately test the ability of young bulls to gain, utilize feed, attain desirable yearling weight and pass a conformation score minimum for individual usefulness and excellence.

The committees are: Advisory—Henry Boice, Tucson; Ernest Browning, Willcox; Ernest Chilson, Winslow; E. Ray Cowden, Phoenix; Floyd Newcomer, Yuma.

Grading—Walter Armer, Tucson; W. J. Van Arsdell, Tucson; Bruce Taylor, Tucson. Supervisor, Bruce Taylor; Assistant supervisor, Al Lane, Tucson; Veterinarian, Dr. Raymond Watts, Tucson.

Breeders with bulls in the current test are:

| | |
|---|---|
| Brangus— | |
| Yuma Valley Cattle Co., Yuma | 5 |
| University of Arizona, Tucson | 1 |
| Charolaise crosses— | |
| Empirita Ranch, Benson | 4 |
| Hereford— | |
| Cowden Livestock Company, Phoenix | 3 |
| Elgin Hereford Ranch, Elgin | 5 |
| Hooper Hereford Ranch, Springerville | 3 |
| IV Bar Ranch, Bisbee | 4 |
| Jay Six Ranch, Benson | 3 |
| Las Delicias Ranch, Tucson | 3 |
| Las Vegas Ranch, Prescott | 3 |
| Long Meadow Ranch, Prescott | 3 |
| Rancho Sacatal, Dos Cabezas | 6 |
| Santa Rita Ranch, Continental | 3 |
| Smoke Tree Ranch, Kirkland | 1 |
| Swinging H Ranch, Elgin | 6 |
| Thurber Hereford Ranch, Sonoita | 3 |
| Santa Gertrudis— | |
| Baca Float Ranch, Nogales | 3 |
| Ki-He-Kah Ranch, Tumacacori | 2 |
| San Cayetano Ranch, Tumacacori | 2 |

Selection Here is Rigid

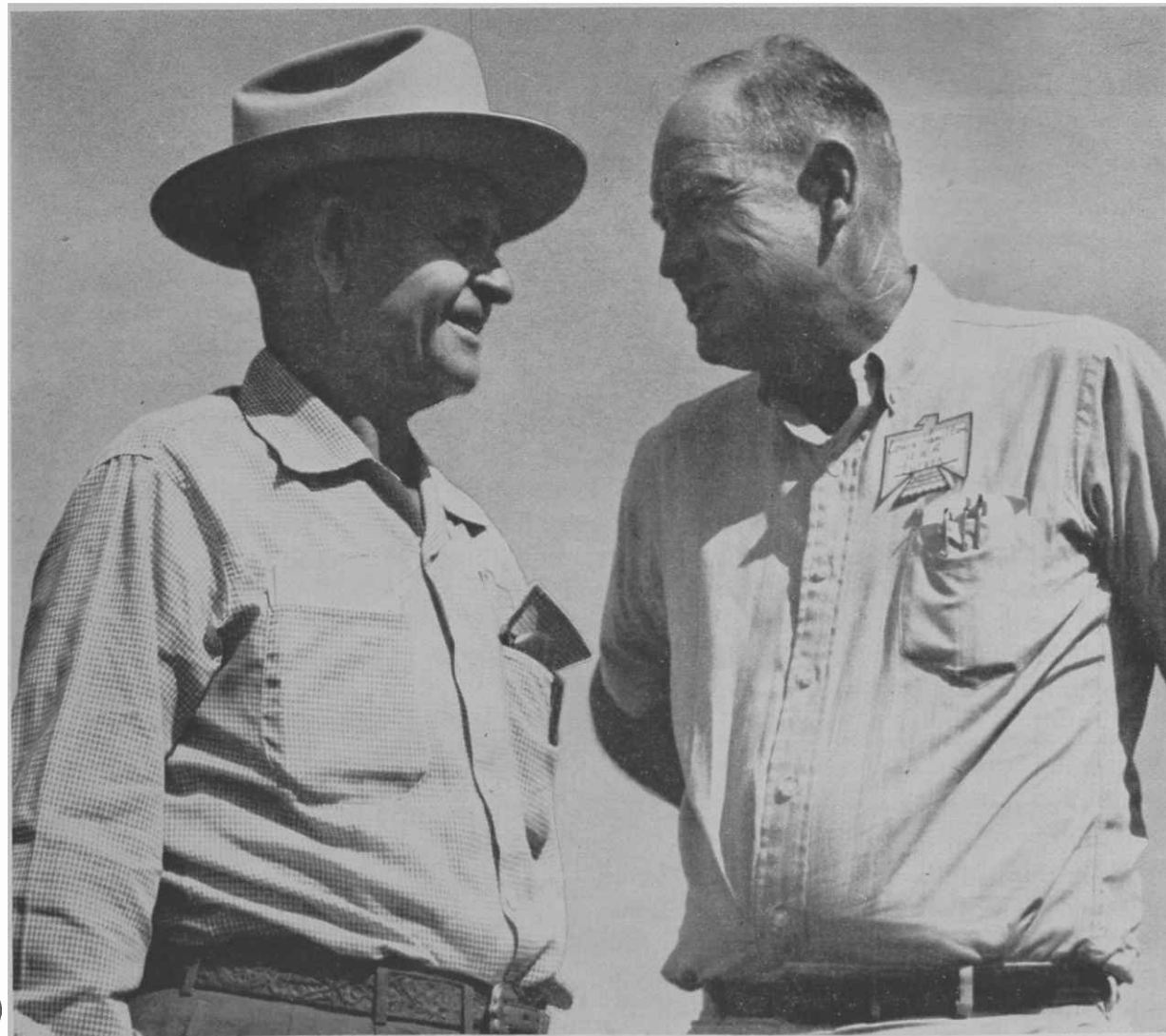
Arizona now joins some 15 other states in the bull evaluation work. Arizona breeders were insistent that theirs be more than just a gain test station, hence it has the added feature of a minimum conformation score of choice or higher grade.

Since conformation score, gaining ability and yearling weight are all heritable traits, the station provides the breeders a means of testing the get of their herd bulls and buyers have an opportunity to select and purchase young bulls that have successfully passed a rigid testing-grading period.

Visitors are invited to the station to watch the progress of the future herd sires and range bulls on test. Soon a large sign will be in place listing the three dozen founders of the station who, through the University of Arizona Foundation, furnished funds for this new facility dedicated to beef cattle improvement. (If you like the paint job [in green] it was all done by the Tanque Verde Livestock Club, one of Pima County's active 4-H groups.)

"Welcome, Pardner"

The entrance to the station is on Dodge Boulevard just south of the corner of Dodge Boulevard and River Road. There you will find Lou Burleson, U. of A. herdsman at the River Road Farm, and Animal Science students Jerry Tool of Elm Creek, Nebraska, and Charles B. "Doc" Lane of Tucson. Jerry and Doc feed the bulls under the supervision of Lou Burleson and Bruce Taylor.



THE ENTIRE state of Arizona is a laboratory for University of Arizona research scientists in agriculture. Here, at a field day in Cochise County, Dr. Vernon Young, left, national president of the American Society of Range Management, chats with Louis P. Hamilton, manager of the UA Plant Materials Center.