



AN EMERGING ASPECT of the instructional program in agriculture in many Arizona high schools is the area of ornamental horticulture and landscaping.

agricultural industry, a comprehensive review and study of existing and projected programs in the high schools of Arizona is under way.

Sponsored cooperatively by the Department of Agricultural Education of The University of Arizona and the Arizona Department of Vocational Education, the study is designed to provide guidelines for development of new programs in agricultural education. Leaders in agriculture, education, business, farm and ranch organizations, and others will be involved in the study. Information will be obtained from the 35 Arizona high schools now offering courses in vocational agriculture to learn how well they are serving the various ability levels in high school, especially in relation to job requirements of off-farm occupations in agriculture.

Federal Funds Open New Vistas for

AGRICULTURAL EDUCATION

Joe P. Bail

Passage by Congress of the Vocational Education Act of 1963 heralds a new era for vocational and technical education in the years ahead. With reference to agricultural education, the act redefines the objectives of the program to include using any amounts allotted "for vocational education in any occupation involving knowledge and skills in agricultural subjects, whether or not such occupation involves

work of the farm or of the farm home, and such education may be provided without directed or supervised practice on a farm."

This new interpretation of the scope and content of courses in agricultural education provides opportunity for development of programs to meet needs of workers in agricultural occupations off the farm as well as those of the farm or ranch.

Whereas at one time the traditional program was available only to students preparing to enter farming, any student may now enroll in an agricultural course if he or she feels that it will provide the educational preparation necessary to enter any occupation in the vast industry of agriculture.

Making Arizona Study

In order to keep pace with the provisions of the new bill, and to more nearly meet the needs of Arizona's

New Pilot Programs

Special pilot programs and new developments now in progress in a number of high schools will receive intensive study as a basis for future courses, procedures and facilities. These programs include new horticulture and plant propagation courses in high schools at Coolidge, Mesa, Phoenix, and Tempe, and land laboratories at Agua Fria, Antelope, Coolidge, Florence, Marana, Phoenix, San Simon and Washington (Glendale district). A new basic course in

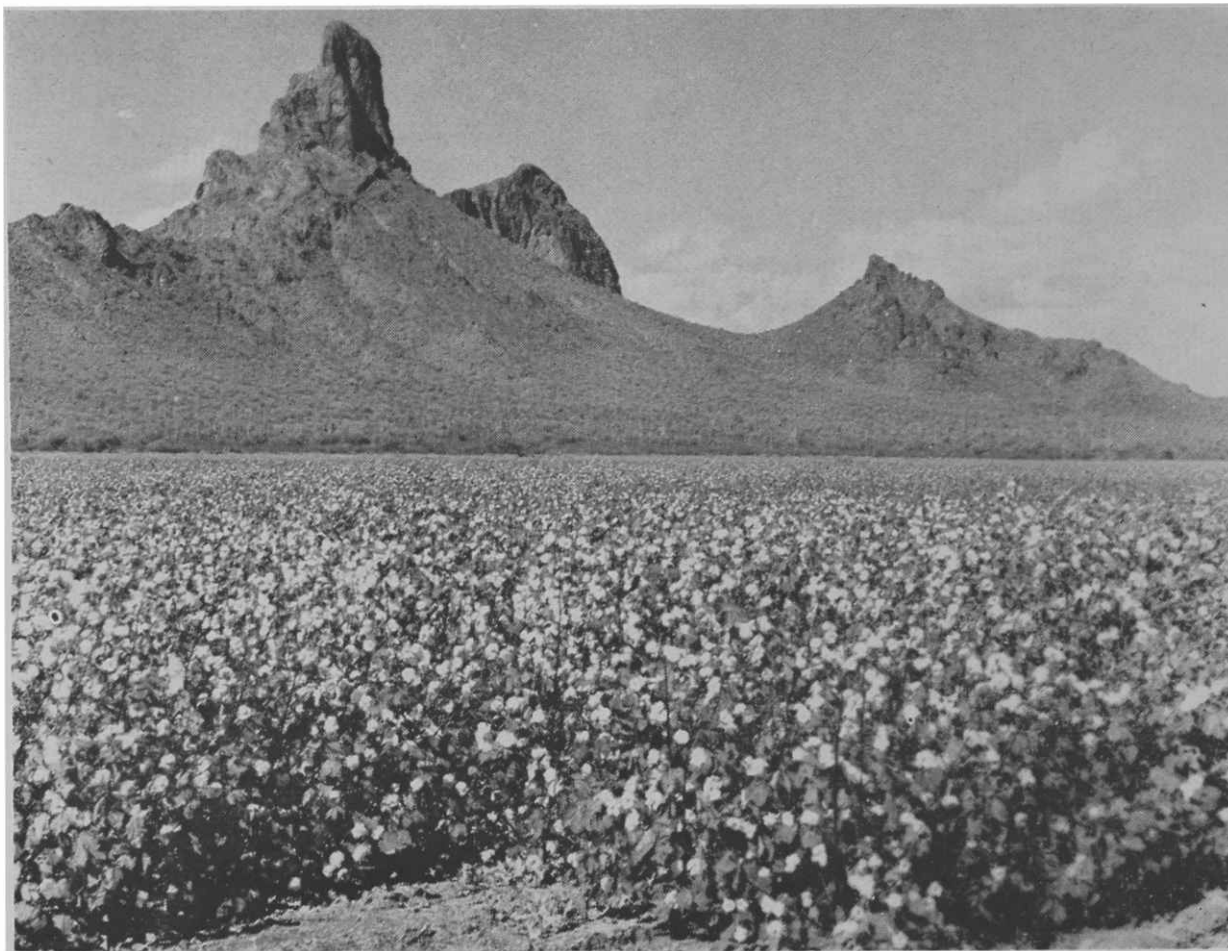
(Continued on next page)

BELOW, PHOTO SHOWS boys in Amphitheater High School, Tucson, learning the principles of engine maintenance and overhaul as a part of their instructional program in agricultural mechanics.



Dr. Bail is on sabbatic leave from Cornell University where he is chairman of the Division of Agricultural Education in the New York State College of Agriculture. He is now visiting research professor of Agricultural Education at The University of Arizona. Dr. Bail is conducting the study under the direction of Dr. R. W. Cline, head of the Department of Agricultural Education.

PICACHO COTTON — OUR MYSTERY PICTURE



Did you know that a cotton field bloomed and thrived at the very base of Picacho Peak, just 40 horseback miles northwest of Tucson? The picture above says

so. Yet, driving by, we've just never seen a cotton field that near the base of the mountain. Turn to Page 24 for the answer to this mystery picture.

Farm Income \$582 Million

Gross value of crops and livestock produced on Arizona's farms and ranches during 1963 totaled \$581.9 million. This was below the record \$588.3 million of 1962, but still was substantially above the average for the previous ten years. Decreases in cotton production and declines in cattle prices were the major factors responsible for the lower income.

(Continued from Previous Page)

agricultural mechanics at Casa Grande high school and a prototype class in agricultural science in Coolidge high school will receive special attention as a part of the study.

The new act also provides special monies for development of programs designed to meet the special vocational education needs of youths, particularly youths in economically depressed communities who have academic, socio-economic, or other handicaps that prevent them from succeeding in the regular vocational education programs.

Developing Resources

In four counties (Mohave, Coconino, Navajo, and Apache), citizens have organized development councils with the aim of developing resources in their areas. The members of these councils have contributed much time and effort. These organizations have stressed inventorying and analyzing their resources and are now developing action programs based upon the analyses.

Large Sums Budgetted

Under the new legislation, Arizona is slated to receive \$438,040 through the fiscal year ending June 3, 1964; \$865,145 through fiscal year 1965; \$1,295,892 through 1966; and \$1,642,680 each year thereafter providing full funds are appropriated by Congress. These funds are to be used in any of the existing programs in vocational education.

Full details of the act may be found in Public Law 88-210, 88th Congress, 1st Session, 1963.



Cochise County

KAWT, Douglas—6:15 a.m. Mon. through Fri.

KHIL, Willcox — Mon. thru Fri., 2 p.m.

Coconino County

KCLS, Flagstaff—Tues. and Thurs., 8:20 a.m.

KGLS, Flagstaff (Home Agent) — Thurs., 9:45 a.m.

KPGE, Page — Fri., 2:30 p.m.

Graham County

KATO, Safford — Sat., 9:30 a.m.

Mon. thru Fri., 12:45 p.m. (daily)

Maricopa County

KTAR, Phoenix — Mon. thru Fri., 5:55 a.m.

KOY, Phoenix — Tues. thru Sat., 5:40 a.m.

KOY, Phoenix — Sunday Garden Club of The Air, 8:35 a.m.

KPHO, Phoenix — Mon., Cotton Report, 12:40 p.m.

KPHO, Phoenix — Thurs., Dairy and Livestock Report, 12:40 p.m.

KUPD, Phoenix — Mon. thru Fri., 5:30 a.m. and 12:30 p.m.

KCAC, Phoenix — Mon. thru Sat., 6:30 a.m.

Mohave County

KAAA, Kingman—Mon., 10:45 a.m.

Navajo County

KDJI, Holbrook — Tues., 1:00 to 1:15 p.m.

Pinal County

KPIN, Casa Grande — Mon. thru Sat., 6:55 a.m.; Mon. and Fri., 9:30 a.m.; Tues., Thurs. and Sat., 12:20 p.m.

Santa Cruz County

KNOG, Nogales — Mon., 6:30 a.m.

Yavapai County

KYCO, Prescott — Mon., Wed. and Fri., 5:55 p.m.

KNOT, Prescott — Mon., Wed and Fri., 5:35 a.m.

Yuma County

KVOY, Yuma — Mon. thru Fri., 5:45 a.m.

KYUM, Yuma — Mon. thru Fri., 6:25 a.m.

Eggs Bring \$5 Million

Total sales from poultry and eggs in Arizona during 1963 reached \$7.4 million compared to \$7.5 million in 1962. Eggs were the major source of income, producing \$5.0 million, slightly down from \$5.2 million in 1962.