

ARIZONA AGRICULTURIST

VOL. 1

DECEMBER, 1924

No. 5

MORE EGG LAYING RECORDS BROKEN

By HARRY EMBLETON
Poultryman, University of Arizona

Arizona Egg Laying Contest Averages 205 Eggs to the Bird in Twelve Months

The results obtained in the Second Arizona Egg Laying Contest held at Tucson under the guidance of the University of Arizona has demonstrated that the poultry producing possibilities of Arizona's climate is still in its infancy. In the Second Contest the average production per bird for the twelve months exceeded that of the First Contest by better than 1½ dozen to the bird. This average is even more remarkable when one considers that all birds in the Contest were entered by Arizona breeders, no outside breeders being allowed to enter, and also that no artificial illumination was used, which is the practice of some Contests.

The S. C. White Leghorn's owned by Griffith of Hayden again demonstrated their egg producing ability by winning the Contest. His pen averaged 252 eggs to each bird. J. A. Liggett's pen of S. C. White Leghorns was a close second with an average production per bird of 241.5 eggs. The Rhode Island Reds owned by S. M. Brimberry of Lewis Springs also made a fine showing, averaging 238.7 eggs to the bird.

The race for the highest individual proved a very close one and was not decided until the last day of the Contest. J. A. Liggett's hen No. 143 won first with 274 eggs to its credit. This individual also won the cup for the best winter egg production. A Rhode Island Red hen No. 31, owned by S. M. Brimberry was only one egg behind the winner. Del Rio Poultry Farm's Leghorn No. 56 and W. Griffith's Leghorn No. 93 were tied for third individual with 271 eggs.

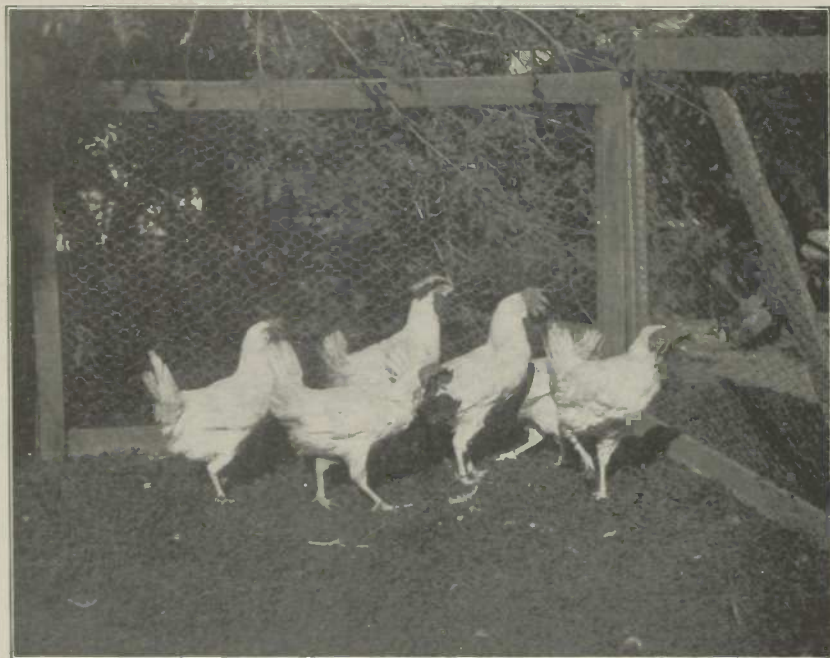
The standing of the Arizona Egg Laying Contest with other leading contests of the United States is shown below.

The total amount of feed consumed by White Leghorns, per bird for the twelve months was 70.0 pounds; by Brown Leghorns, 61.4 pounds, by An-

conas, 59.4 pounds; by Barred Rocks, 80.7 pounds; by Rhode Island Reds, 83.5 pounds.

The average egg production per bird for the twelve months was: for the White Leghorns, 78 birds entered,

The average cost of feed per bird per year for all breeds was \$1.95; for White Leghorns \$1.91; for Brown Leghorns \$1.65; for Anconas \$1.58; for Barred Rocks \$2.21; for Rhode Island Reds \$2.29.



Winning pen of S. C. White Leghorns owned by W. Griffith, Hayden, Ariz.

200.8 eggs; for the Brown Leghorns, 12 birds entered, 156.4 eggs; for the Anconas, 6 birds entered, 158.3 eggs; for the Barred Rocks, 6 birds entered, 200.2 eggs; for the Rhode Island Reds, 18 birds entered, 203.3 eggs.

The feed cost of producing one dozen White Leghorn eggs was 11.4 cents; of one dozen Brown Leghorn eggs 12.7 cents; of one dozen Anconas eggs 12.0 cents; of one dozen Barred

(Continued on Page 10)

	Average Eggs per Bird	Eggs High Individual	Average High Pen
Arizona	204.9	274	252.2
Washington	207.8	317	281.6
North American Del.	176.8	281	243.4
Arkansas (Monticello)	—	267	228.2
Missouri	195.06	298	267.2
California (Pomona)	178.3	290	230.6
California (Somona Co.)	185.8	292	230.8
Oklahoma	186.5	295	254.0
Connecticut (Storrs)	167.7	324	253.0

NOTE:—In all contests, except Arizona, competition is open to the world.

Three High Hens for Year

Hen No. 143, J. A. Liggett, S. C. White Leghorn	274 eggs
Hen No. 31, S. M. Brimberry, S. C. I. Red	273 eggs
Hen No. 56, Del io Poultry Farm, S. C. White Leghorn	271 eggs
Hen No. 93, W. Griffith, S. C. White Leghorn	271 eggs

Average eggs per bird (12 months) 204.9 eggs.

Average percentage production (12 months) 56.1 per cent.

NOTE: Based on five best hens in pen.

	Average Percentage Production for Twelve Month		Average
	No. Birds	Eggs	Eggs per Bird
13 pens S. C. White Leghorns	78	15664	200.8
2 pens S. C. Brown Leghorns	12	1877	156.4
1 pen Anconas	6	950	158.3
3 pens S. C. R. I. Reds	18	3659	203.3
1 pen Barred Rocks	6	1201	200.2

NOTE: Based on all birds entered.

This report of the Arizona Egg Laying Contest is certified correct for the year November 1, 1923 to October 31, 1924.

J. J. Thornber,

Dean and Director,

Arizona Agricultural Experiment Station.

HARRY EMBLETON, Poultryman,

Supervisor of Contest.

SUMMARY OF RESULTS

	Five High Birds					5-6 Total	Total 5
	366 Days					Floor Eggs	Birds
Pen No. 9. W. Griffith, Hayden.							
S. C. White Leghorns	267	271	256	226	226	13	1261
Pen No. 14. J. A. Liggett, Phoenix.							
S. C. White Leghorns	217	274	227	230	237	22.5	1207.5
Pen No. 3. S. M. Brimberry, Lewis Springs.							
S. C. R. I. Reds	273	218	187	258	217	40.6	1193.6
Pen No. 5. Del Rio Poultry Farm, Mesa.							
S. C. White Leghorns	193	237	165	233	271	41.5	1140.5
Pen No. 13. E. L. Andrews, San Bernardino, Cal.							
S. C. White Leghorns	220	200	230	227	223	30	1131
Pen No. 10. E. R. Johnson, Casa Grande.							
S. C. White Leghorns	210	208	259	199	203	45.8	1124.8
Pen No. 8. T. H. Westfall, Phoenix.							
S. C. White Leghorns	168	252	240	228	165	20	1073
Pen No. 11. C. A. Brion, Chandler.							
Barred Rocks	227	158	157	179	205	120	1046
Pen No. 2. H. L. Schornick, Tempe.							
S. C. R. I. Reds	197	199	227	189	185	40	1037
Pen No. 12. P. D. Hirschy, Phoenix.							
S. C. R. I. Reds	198	159	179	179	232	54.1	1001.1
Pen No. 7. Sunnyside Poultry Farm, Phoenix.							
S. C. White Leghorns	199	185	204	172	171	70	1001
Pen No. 15. J. F. McKale, Tucson.							
S. C. White Leghorns	257	208	179	164	149	40	997
Pen No. 4. W. W. Mitchell, Mesa.							
S. C. White Leghorns	185	234	161	185	195	24	984
Pen No. 6. E. Draper, Glendale.							
S. C. White Leghorns	205	180	177	213	151	40	966
Pen No. 17. O. S. Shill, Mesa.							
S. C. White Leghorns	193	151	176	161	212	32.5	925.5
Pen No. 1. Lee Apel, Mesa.							
S. C. Brown Leghorns	174	122	194	215	190	27.5	922.5
Pen No. 18. W. Griffith, Hayden.							
S. C. White Leghorns	183	168	164	166	214	25.8	920.8
Pen No. 16. A. M. Meyer, Tucson.							
S. C. White Leghorns	167	175	165	189	171	27.5	894.5
Pen No. 19. J. D. Johnson, Mesa.							
S. C. Anconas	156	197	165	169	141	26.6	854.6
Pen No. 20. W. W. Mitchell, Mesa.							
S. C. Brown Leghorns	155	152	156	144	119	85.5	811.5

MORE EGG LAYING
ARE RECORDS BROKEN

(Continued from Page 3.)

Rock eggs 13.2 cents; of one dozen Rhode Island Red eggs 13.5 cents.

The feed in pounds necessary to produce one dozen White Leghorn eggs was 4.2 pounds; one dozen Brown Leghorn eggs 4.7 pounds; one dozen Ancona eggs 4.5 pounds; one dozen Barred Rock eggs 4.8 pounds; one dozen Rhode Island Red eggs 4.9 pounds.

The cost of one hundred pounds of mash was \$3.05; of one hundred pounds of grain \$2.39.

The average price of a dozen eggs for the duration of this contest was 43½ cents. This was the local price for ranch eggs.

With an average feed cost of \$1.05, an average production of 195.8 eggs, and an average price of 43.5 cents per dozen, the average profit per bird for the contest above the cost of feed was \$5.15.

RHUBARB'S HISTORY

Rhubarb, which seems to have no romance, really has a history. It was brought into England in 1573 from the Volga, but for two centuries it remained a gardener's curiosity, so that its use as an article of food is of comparatively recent origin. In 1810, when a Depford market gardener sent a few stalks to London he was unable to find customers for it. However, the use and cultivation of the plant made rapid progress to this country from England. Rhubarb is valuable not only for its mineral content and its acid, but for its flavor, and is therefore much in favor as a fine spring tonic.

Give A Gift
For The Car

At Christmas no gift can please a motorist more than a gift to the car.

There are so many useful, acceptable things to choose from that any car owner can be pleased with something he wants and needs.

We will be glad to show you these desirable gifts.

**Southern Arizona
Motor Co.**
6th and Broadway
Tucson, Ariz.