

ACTIVITIES IN POULTRY AT THE U. OF A.

By J. E. BACKMAN, '25

Many Experiments Are Being Carried on at the University of Arizona Poultry Farm in Order to Obtain Further Information Regarding Poultry Conditions in Arizona

The duty of the various poultry departments of the state colleges in their experimental problems, is primarily to work out means by which certain sound practices may be used to best advantages for the poultry industry within their respective states. In many cases the definite results they accomplish is of direct benefit to the entire nation in its poultry work. The object of this article is to briefly outline some of the work being carried on with poultry at University of Arizona.

It must be granted that the poultry industry of Arizona is young, but growing at a rapid rate. The demand for the products has always been greater than the supply. The field for poultry breeders and baby chick business, except in a few cases, is practically untouched. Poultrymen have centered their efforts entirely on securing egg production. California supplies the greatest percent of stock, especially day old chicks. With its rapid growth and increase in poultry products we must look forward to marketing association, cold storage facilities, and accredited hatcheries.

In the work being done on poultry at University of Arizona, probably the outstanding, or I should rather say, the one that has received the most pub-

licity is the Arizona Egg Laying Contest. The rules of this contest are comparable to contests of the same nature found in nearly all other states. Trapnest and feed records are kept of each individual pen entered. The birds with their records of production are returned at the end of the year to the owner. These records are spoken of as official records, and are of great value to the owner

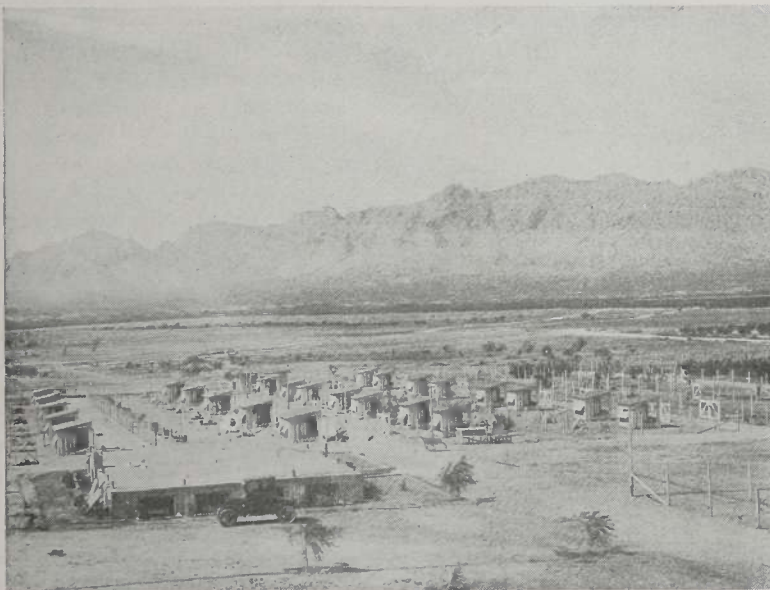
in many cases. The monthly summary throughout the year of the contest gets wide publicity, and serves as a great advertising feature to the owner. The third contest is now in progress. During the first year the birds in the contest averaged 186 eggs per bird. The second contest increased the average to 205 eggs. A detailed summary of the first two contest will soon appear in bulletin form.

Another project is spoken of as the Foundation Stock Project. The first stock used at the Station proved to be rather poor as far as egg production was concerned. New blood has been introduced from exceptionally high producing stock. The leghorn improvement males came from Hanson of Oregon. In the Reds, the Poorman stain was used. The results of this work is already seen in increased production. The new blood introduced for the present hatching season is worthy of mention. Five pullets from Mrs. W. Griffith are daughters of winning contest pen of 1922-23. Four cockrels from McKale of second high pen of 1922-23 contest. A cockrel from Wrenn at Florence, Ariz. The dam of this individual laid 312 eggs. The object of all this work is to increase egg pro-

(Continued on Page 16.)



COMMERCIAL TYPE OF POULTRY LAYING HOUSE AT THE UNIVERSITY OF ARIZONA POULTRY FARM.



A VIEW OF THE NEW POULTRY PLANT AT THE UNIVERSITY OF ARIZONA.

ACTIVITIES IN POULTRY

(Continued from Page 9.)

duction on the college poultry farm, and throughout the state. The last mentioned is accomplished by sale of pedigreed progeny from the improved stock.

The Date of Hatching Project has for its object the determination of the best possible date to hatch chicks to get most profitable egg production. Chicks in this project are hatched every two weeks throughout the year, reared to maturity, and trapnested a full year. From results to date, Arizona conditions seem to favor the month of March.

A fourth project is known as the Chick Feeding and Breeding Project. Last year this work was carried on with eight different chick rations. This will be repeated again this year. The greatest gains, least mortality, price of ration, and availability of ration locally, are some of the observations noted in this work. With at least two years of definite work on such a project as this, recommendations may be made with certainty to poultrymen of the state.

Another project of importance is the Comparison of Protein Supplements for Egg Production. This work has two objects in view: First, to determine the relative value of alfalfa meal and bran as a basis for mashes. Second, to determine the relative value of cotton seed meal, meat scrap, and dried buttermilk as a protein concentrate for egg mashes. This work is at present progressing, and the results to date seem to point to bran as the basis of the mash, while dried buttermilk as a protein concentrate seems

to give the best egg production. Definite information on this will be available next November.

The last project under observation is known as Broiler Production. The object here is to determine the most satisfactory combination of feed for economical production of broilers, the most desirable fattening period, and the size of the flock to be fattened. This work will be continued during the coming spring

The above mentioned are but a few of the problems confronting Arizona poultrymen. Housing and Poultry Illumination for increased production are very important, and work on these will soon commence. Other important problems such as Simple or Variety Ration, Effect of High Egg Production on Future Vigor and Production in Offspring, Causes of Alfalfa Eggs, Testing of Roup Vaccine, and Culling gives some conception of the great field available in experimental work at this station. It is hoped that some day definite results on all the above may become a reality.

IRISH COBBLER

and

BLISS RED TRIUMPH

MINN. GROWN

Write or Ask for Prices

Langers

100 E. Congress

Tucson

SHUMAKER

(Former peace officer)

&

EDWARDS

(Formerly with S. Ariz. Motor Co.)

SERVICE STATION

Texaco Oils

6th & Toole Av.

Tucson

SATISFACTION In Radio Means Gilfillan Neutrodyne

We'll gladly demonstrate anytime without obligation.

For Things Electrical

GRABE ELECTRIC CO.

26 E. Congress

Phone 628

**Mr.
Farmer:**

We have made a big purchase of army harness, used, but good as new.

We quote double breechen harness, complete with collars, lines, etc., for \$36.50.

New Concord harness, 1¾-inch triple stitched trace, with 2-inch butt chains, \$15.00 per double set.

New army work bridles, with blinds and overdraw rein, \$2.50 each.

New army lines, 1-inch, 18 feet long, \$6.00.

Used army leather halters, 50c each.

New army leather collars, \$6.00 each.

Taffoon canvas, all widths and weights, at the lowest prices.

U. S. red rubber knee boots, \$5.00; hip boot \$7.00.

We carry a complete line of work clothing and shoes, at the lowest prices.

Send Us Your Mail Orders

THE ARMY STORE

215 East Congress

Tucson, Arizona