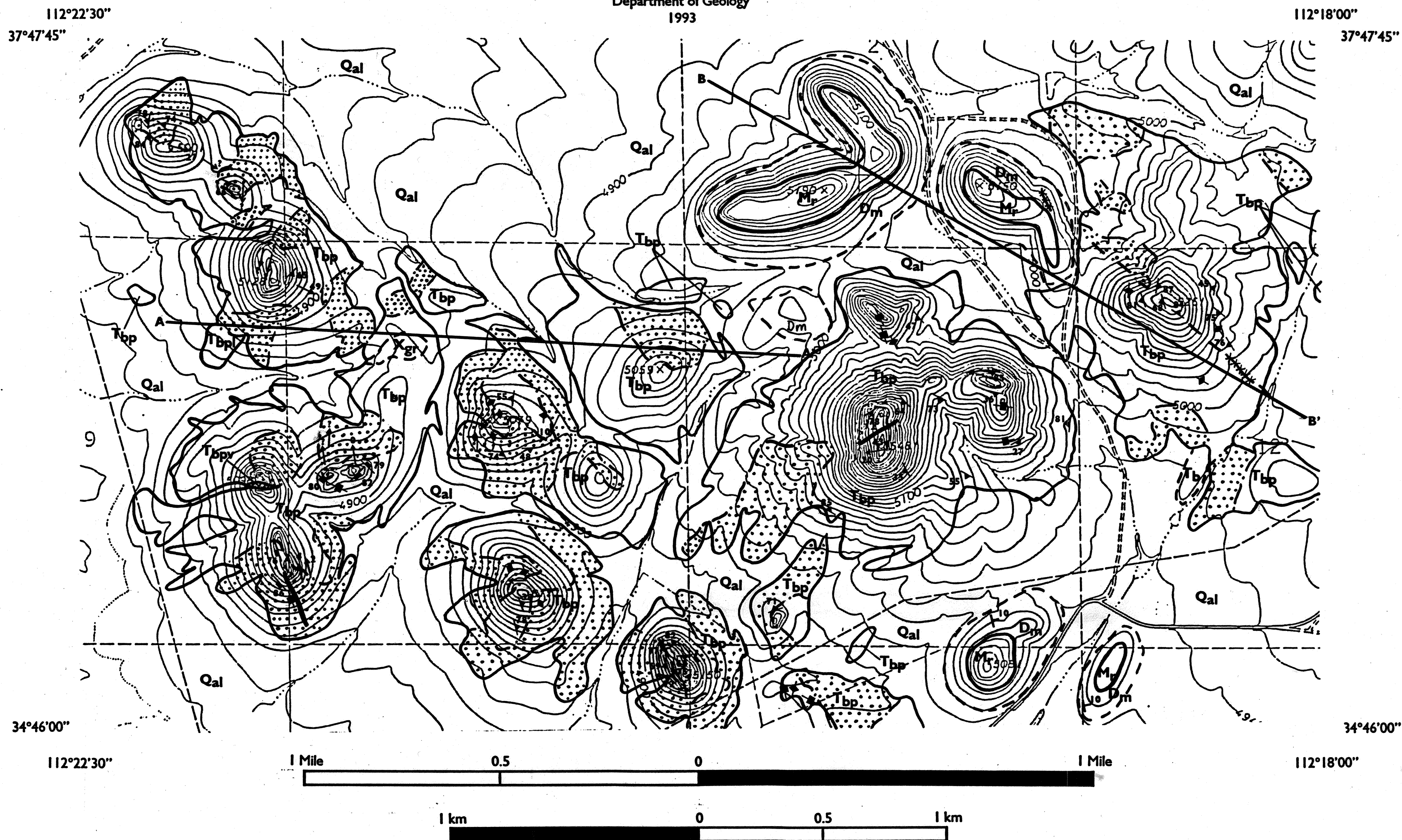
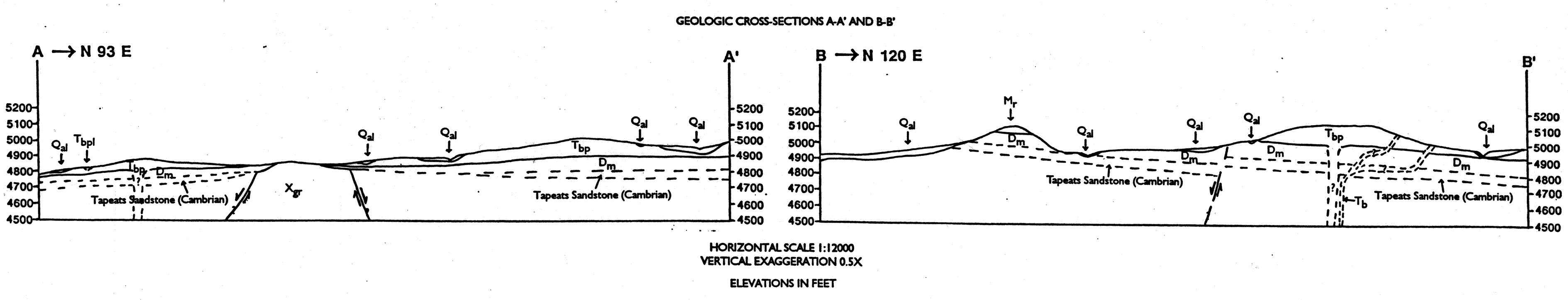


GEOLOGIC MAP OF VOLCANIC ROCKS ALONG THE EAST SIDE OF CENTRAL CHINO VALLEY, YAVAPAI COUNTY, ARIZONA

by
William L. Stefanov
Arizona State University
Department of Geology
1993

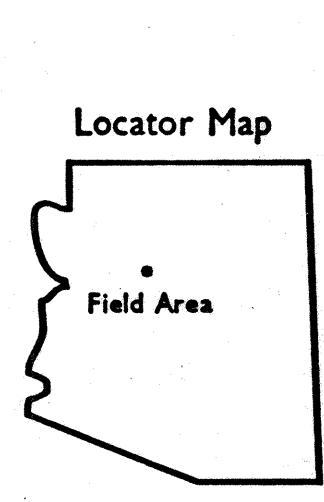


SCALE 1: 12000



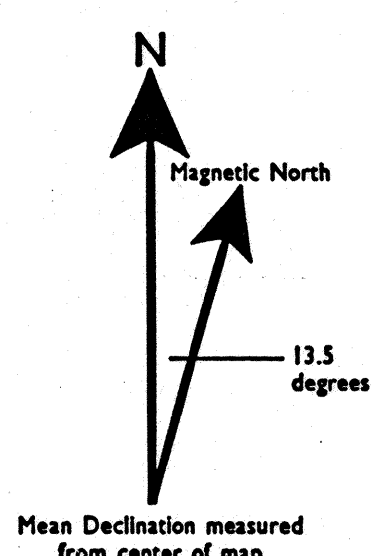
- ### Legend
- | | | |
|-------------|-----|------------------------------------------------------------------------------------------------------------------------------------------------------------------------------------------------------------------------------------------------------------------------------------------------------------------------------------------------|
| Quaternary | Qal | Quaternary Alluvium - present as stream deposits and gravels overlying Tertiary rocks. |
| Tertiary | Tb | Basalt - black to gray vesicular rock, present as isolated outcrops, dikes, and lag fields (Upper Tertiary). |
| | Tbp | Sullivan Buttes Latite - massive, poorly- to non-foliated and vesiculated gray and pink lava. Biotite-pyroxene latite present in mapped area. Contains locally abundant eclogite, pyroxenite, amphibolite, and crustal xenoliths. Occurs as flows, volcanic breccias (Tbpv), lahar deposits (Tbpl), and domes (Upper Oligocene-Lower Miocene). |
| Paleozoic | Mr | Redwall Limestone - occurs as massive cap unit overlying buttes of Martin Dolomite (Mississippian). |
| | Dm | Martin Dolomite - massive, with sparse coral fossils (Devonian). |
| Proterozoic | Xgr | Prescott Granodiorite - peach-colored outcrop of local bedrock or fault block, cut by sparse greenstone dikes (Lower Proterozoic). |

- ### Symbol Key
- | | | | | | |
|-----------|------------------------|----|----------------------------------|---------|------------------|
| — | Contact | 23 | Strike and dip of foliations | —X—X— | Dike |
| - - - | Contact, approximate | ◆ | Strike of vertical foliations | ▨ | Volcanic Breccia |
| - · - · - | Contact, gradational | 20 | Strike and dip of joints | · · · · | Gray latite |
| — — | Fault, nonspecific | + | Strike of vertical joints | | |
| ∇ | Strike and dip of beds | → | Bearing and plunge of lineations | | |



- ### References
- Krieger, M.H. 1965. Geology of the Prescott and Paulden Quadrangles, Arizona. *United States Geological Survey Professional Paper* 467, 127 pp.
- Stefanov, W.L. 1992. Rheology and possible xenolith transport mechanisms of the Sullivan Buttes Latite, Yavapai County, Arizona. Unpublished M.S. thesis, Arizona State University, Tempe, AZ.
- Tyner, G.N. 1984. Geology and petrogenesis of the Sullivan Buttes Latite, Yavapai County, Arizona: field and geochemical evidence. Ph.D. dissertation, University of Texas at Austin.

Map compiled from detailed geologic mapping, USDA air photos (24 613090 377-190, 191, 192, 222, 223, 224), and Plate 2 of Krieger (1965). Topographic base is photo-enlargement of a portion of the King Canyon 7.5 minute quadrangle map (USGS, 1979; 1:24000).



Contour Interval 20 feet
Datum is mean sea level