

LANE RADIOACTIVITY LOG WELLS

COMPANY: WADDELL & DUNCAN CO.

WELL: McCOMB No. 1

FIELD: COCHISE CO., W/C

COUNTY: COCHISE STATE: ARIZ.

LOCATION: SE/4 OF SW/4 OF SEC. 23-138-24E

LOG MEASURED FROM TOP OF ROTARY ELEVATION **4200'**

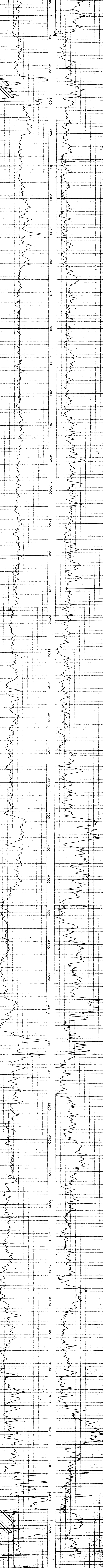
DRILLING MEASURED FROM T.O. SURFACE ELEVATION **4200'**

PERMANENT DATUM **GROUND LEVEL** ELEVATION **4193'**

RUN NUMBER TYPE OF LOG DATE COMPANY DEPTH MAXIMUM DEPTH REACHED WELL FLUID FLUID LEVEL MAXIMUM TEMPERATURE O.D. OF INSTRUMENT—INCHES SENSITIVITY REFERENCE RECORDED BY WITNESSED BY	1 GAMMA RAY 4-30-49 6584' 6586' MUD FULL 3 5/8 274 HUNION WADDELL	1 NEUTRON 4-30-49 6584' 6586' MUD FULL 3 5/8 275 HUNION WADDELL
--	---	---

CASING RECORD RUN NO. 1 SIZE IN. 7 INTERVAL SURFACE 1890'	OPEN HOLE RECORD INTERVAL 6 1/4 1890' TO 1900'
---	--

REMARKS OR OTHER DATA



R. D. 6584'
 T. D. 6586'
WADDELL & DUNCAN CO.
 McCOMB No. 1
 COCHISE CO. W.C.