

Current Literature of Range Management

This section has the objective of alerting SRM members and other readers of *Rangelands* on the availability of new, useful literature being published on applied range management. Your recommendations on making this bibliography more useful are requested. Also, the compiler requests readers to suggest literature items—and preferably also contribute individual copies—for including in this section in subsequent issues.

- Alfalfa for Dryland Grazing;** by Russel J. Lorenz, Ronald E. Ries, Clee S. Cooper, Charles E. Townsend, and Melvin D. Rumbaugh; 1982; USDA Agric. Info. Bul. 444; 24 p. (USDA, Agric. Res. Serv., Washington, D.C. 20250) A compilation of literature review and concepts on the production and grazing of alfalfa under dryland, rangeland conditions.
- Bur Buttercup: It Will Get Your Sheep if You Don't Watch Out;** by J.D. Olsen, T.E. Anderson, and Gary Madsen; 1982; Utah Sci. 43(1):10-13. (Bulletin Room, Utah State University, Logan, Utah 84321) Field observations and experimental studies verifying the toxicity of bur buttercup to sheep, with management implications.
- Caribou and Domestic Reindeer Grazing on Public Lands in Alaska: Introduction to a Unique Management Problem;** by Layne G. Adams and Matthew H. Robus; 1981; Trans. N. Amer. Wildl. & Nat. Resources Conf. 46:319-328. (USDI, Bur. Land Mgt., Fairbanks, Alaska 99701) Explains the competition of wild caribou and domestic reindeer grazing in northwest Alaska, and suggests approaches to resources allocation between the two species.
- Chemical Weed Control in Pastures and Ranges of Hawaii,** by Philip S. Motooka; 1981; Ha. Agric. Res. Ext. Ser. 9; 11 p. (Univ. Hawaii, Inst. Trop. Agric. & Human Resources, Honolulu, Ha. 96822) Provides current chemical control recommendations for undesirable woody and herbaceous plants on Hawaii pastures and rangelands.
- Cow-Calf Management Guide and Cattleman's Library;** by J.D. Man-kin (Comm. Chm.); 1981; Agric. Ext. Serv., Univ. Ida., Moscow, Ida.; Not paged. (Available from Univ. of Idaho for \$35, or from cooperating Extension Services in Montana, Oregon, Utah, Washington, and Wyoming; exact title may vary.) A loose-leaf manual containing fact sheets on various aspects of cow-calf management prepared by extension specialists in cooperating states; organized by subject sections and well indexed; adapted for use under rangeland conditions.
- The Cyanide Potential of Saskatoon Serviceberry (*Amelanchier alnifolia*) and Chokecherry (*Prunus virginiana*);** by W. Majak, R.E. McDiarmid, and J.W. Hall; 1981; Can. J. Anim. Sci. 61(3):681-686. (Research Station, Agric. Can., 3015 Ord Road, Kamloops, B.C. V2B 8A9) Provides the basis for predicting toxic HCN levels for ruminants in serviceberry and chokecherry.
- Dormant Season Grazing of Alfalfa;** by E.H. Jensen, R.R. Skivington, and V.R. Bohman; 1981; Nev. Agric. Expt. Sta. R-41; 4 p. (Bulletin Room, Agric. Expt. Sta., Reno, Nev. 89557) A study of the effects of dormant season grazing and early grazing on alfalfa hay production.
- Ecology and Control of Goldenweeds;** by C. Wayne Hanselka, H.S. Mayeux, Jr., and Edmundo Martinez; 1981; Tex. Agric. Ext. Leaflet 2003; 3 p. (Bulletin Room, Coll. Agric., Texas A&M Univ., College Station, Tex. 77843) Summarizes information on the description, range suppression and control, and management implications of goldenweeds in South Texas.
- The Effects of Stocking Rate and Level of Winter Supplementation on Pregnancy Rates in Spring Calving Cows in the Kansas Flint Hills;** by L.R. Sprott, C.E. Owensby, L.R. Corah, and G.H. Kiracofe; 1981; Kan. Agric. Expt. Sta. Rep. Prog. 394, p. 37-39. (Bulletin Room, Agric. Expt. Sta., Manhattan, Kan. 66502) A progress report on the interacting effects of stocking rates and winter nutrition in cow-calf programs.
- Establishing and Managing Irrigated Pasture for Horses;** by M.R. George, R.F. Miller, and G.H. McNeely; 1980; Univ. Calif., Div. Agric. Sci. Leaflet 21164; 10 p. (Agric. Ext. Serv., Univ. Cal., Berkeley, Cal. 94720) A semi-technical publication directed to horse owners.
- Germination of *Kochia prostrata* Seed.;** by James A. Young, Raymond A. Evans, Richard Stevens, and Richard L. Everett; 1981; Agron. J. 73(6):957-961. (USDA, Agric. Res. Serv., Reno, Nev. 89557) Results of a study to characterize the germination requirements of *K. prostrata* seeds, with special emphasis on temperature.
- Grasses and Their Uses in Alaska;** by William W. Mitchell; 1982; Agroborealis 14(1):34-37. (Agric. Expt. Sta., Univ. Alaska, Fairbanks, Alaska 99701) Emphasis given to species recommendations for seeding pasture and turf and revegetating natural grazing lands in Alaska.
- Grazing Management on Rangelands;** by Carlton H. Herbel; 1982; J. Soil & Water Cons. 37(2):77-79. (USDA, Agric. Res. Serv., Las Cruces, N.M. 88003) A discussion of grazing management principles and their interaction with range improvement practices.
- Herbage Dry Matter Yields of Switchgrass, Big Bluestem, and Indiangrass with N Fertilization;** by K.E. Hall, J.R. George, and R.R. Riedl; 1982; Agron. J. 74(1):47-51. (Dept. Agron., Iowa State Univ., Ames, Iowa 50011) A study of the response of three key warm-season grasses to nitrogen fertilization.
- Manipulation of Grazing to Improve or Maintain Wildlife Habitat;** by Jerry L. Holechek, Raul Valdez, Sanford D. Schemnitz, Rex D. Pieper, and Charles A. Davis; 1982; Wildl. Soc. Bul. 10(3):204-210. (Dept. Anim. & Range Sci., N. Mex. State Univ., Las Cruces, N.M. 88003) Manipulation of livestock grazing to maintain or improve wildlife habitat is reviewed.
- Nutrient Content of Grasses Growing on Four Range Sites in South Texas;** by J.H. Everitt and M.A. Alaniz; 1982; USDA Agric. Res. Results ARR-S-11; 20 p. (Soil & Water Cons. Res., Agric., Res. Serv., P.O. Box 267, Weslaco, Tex. 78596) Results of a study to characterize the crude protein and mineral composition of grasses during the growing season.
- Nutritive Value of Chaparral for Goats Grazing on Fuel-Breaks;** by Ahmed E. Sidahmed, Steven R. Radosevich, James G. Morris, and Ling J. Koong; 1982; Calif. Agric. 36(5-6):12-14. (Agric. Pub., Univ. Cal., Berkeley, Cal. 94720) A study of the nutritive value of pre-browsed and post-browsed sprouting shrub species and the relationship of plant characteristics to digestibility.
- Nutrient Requirements of Goats: Angora, Dairy, and Meat Goats in Temperate and Tropical Countries;** by Natl. Acad. Sci.; 1981; Natl. Acad. Press, Washington, D.C.; 168 p. (Natl. Acad. Press, 2101 Constitution Ave., N.W., Washington, D.C. 20418; \$7.75) Gives special attention to nutrient requirements of kids lactating does, and breeding males; establishes ration formulation guidelines; includes comprehensive tables showing nutritive content of forages and feeds; and summarizes metabolic disorders of goats; good bibliography.
- Perennial Plants for Irrigated Pasture;** by James T. Nichols; 1981; Neb. Agric. Ext. NebGuide G81-567; 4 p. (Agric. Ext. Serv., Univ. Neb., Lincoln, Neb. 68503) A guide to selecting adapted, perennial grasses and legumes for high production from irrigated pasture.
- Ponds—Planning, Design, Construction;** USDA, Soil Cons. Serv.; 1982; USDA Agric. Handbook 590; 51 p. (USDA, Soil Cons. Serv., Washington, D.C. 20250) A handbook on designing and constructing water ponds to realize desired multiple uses.

Problems Facing Wildlife Habitat Management on Canadian Forest Lands; by E.S. Telfer and T.C. Dauphine; 1981; Trans. N. Amer. Wildl. & Nat. Resources Conf. 46:358-368. (Can. Wildl. Serv., Edmonton, Alta. T5J 1S6) Evaluates reasons why wildlife receive minimal consideration in the management of Canadian forests; itemizes the planning deficiencies and offers solutions.

The Response of Honey Mesquite to Herbicides; by R.W. Bovey and R.E. Meyer; 1981; Tex. Agric. Expt. Sta. Bul. 1363; 12 p. (Bulletin Room, Coll. Agric., Texas A&M Univ., College Station, Tex. 77843) A literature review and synthesis of factors involved in herbicide effectiveness in controlling mesquite.

Response of Semiarid Grassland Sites to Nitrogen Fertilization: I. Plant Growth and Water Use; II. Fertilizer Recovery; by J.F. Power; 1980; Soil Sci. Soc. Amer. J. 44(3):545-555. (USDA, Agric. Res. Serv., Lincoln, Neb. 68583) A study of factors controlling nitrogen transformations and utilization in grassland ecosystems.

Summer Diets of Rocky Mountain Elk in Northeastern Oregon; by Robert C. Korfhage, Jack R. Nelson, and Jon M. Skovlin; 1980; J. Wildl. Mgt. 44(3):746-750. (Bur. Land Mgt., 355 Hemsted, Redding, Cal. 96001) A study of elk food habits in higher elevation vegetation types in Oregon's Blue Mountains.

Wildlife Values; by William W. Shaw and Ervin H. Zube (Eds.); 1980; USDA, For. Serv., Rocky Mtn. For. & Range Expt. Sta., Fort Collins, Colo.; 117 p. (USDA, For. Serv., 240 West Prospect St., Fort Collins, Colo. 80521) Proceedings of a workshop on assessing wildlife values and the application of this information in management of wildlife and their habitats.

Additions to the SRM Library

The publications listed below were sent to the SRM Library in Denver by Donald T. Pendleton, National Range Conservationist, Soil Conservation Service, Washington, D.C.

Passey, H.B., Vern K. Hugie, E.W. Williams, and D.E. Ball. 1982. Relationships between soil, plant community, and climate on rangelands of the Intermountain West. USDA Technical Bulletin No. 1669.

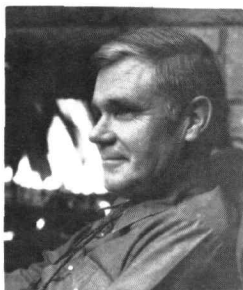
Thornburg, Ashley A. 1982. Plant materials for use on surface-mined lands in arid and semiarid regions. Soil Conservation Service-TP-157.

National List of Scientific Plant Names. 1982. USDA-SCS-TP-150. Volumes 1 and 2. List of Plant Names and Synonymy.

Appraisal Part I. 1981. Soil, Water and Related Resources in the United States: Status, Conditions, and Trends; and Appraisal Part II. 1981. Soil, Water and Related Resources in the United States: Analysis of Resource Trends.

Land Resource Regions and Major Land Resource Areas of the United States. Agriculture Handbook 296, published in December 1981. It replaces a 1965 publication.

President's Notes



Jameson, our Research Affairs Chairman, was present at a Public Land Research Committee meeting in Billings, Montana, on October 29. And the list goes on—

Section Meetings

In the fall the pace of Section activities quickens with the annual meetings coming in rapid succession (or overlap). I have attempted to attend as many Section meetings as is feasible, or to have other Society representation whenever I was unable to do so. During October I had the opportunity to meet with our National Capital Section, enabling me to see some long-time friends in the Washington area. November was a pleasantly hectic month, with an International-Mountain Section meeting in Great Falls the first week, an Idaho meeting in Pocatello the second week, and a Pacific Northwest Section meeting in Wenatchee during the fourth week. Jan Duck carried the Society banner to the South Dakota Section meeting at famous Wall Drug in October, the Nebraska Section meeting in Ogallala, the Wyoming Section meeting in Laramie, and the Colorado Section meeting in Fort Collins, all during November. I feel it is extremely important for Sections to get the latest word on Society activities. There is also the equally great advantage to the Society of hearing from the Sections. Jan always comes back to Denver full of ideas gleaned from the Section meetings.

Around Washington

While I was in Washington I had appointments with several agency people which were very rewarding. Peter Meyers, the new Chief of the Soil Conservation Service, is eagerly looking forward to participating in our annual meeting program in Albuquerque. I was most happy to be able to become acquainted with this dedicated man. Robert Burford, the Director of the Bureau of Land Management, also welcomed me to his office when we discussed our mutual interest in wild horses and burros. I assured him that the Society was anxious to assist the BLM by providing our input on issues of mutual concern. Dale Robertson, Associate Chief of the

When You're Having Fun. . .

By the time you read these notes 1982 will be history, or close to it. To me, it seems hardly possible that my term as your president will soon be part of my personal history. It has truly been a case of "time passes quickly when you're busy" or "time flies when you enjoy what you're doing" as both of these old adages apply. However, I'm not the only one who has been busy on Society affairs. Our staff in Denver rank high on the list and I feel the Society has benefitted greatly through their efforts.

Public Affairs

Since I last penned my notes, Bill Hurst, Clare Hendee, and other Public Affairs Committee members have continued actively working on current issues of concern to us. Amendments to the Wild Horse and Burro Act will reappear in the 98th Congress and the Society will have a voice in the public input, whether in hearings or by written statements. We feel the proposed amendments are needed in order to properly manage these animals within the capacity of their ranges.

Chip Merrill is still as active as ever, wearing his SRM cap along with several others. He presented a paper at the International Ranchers' Roundup in Texas in August and also addressed the Kansas Livestock Association meeting during that month. Howard Morton participated in the 25th anniversary Program of La Campana Experiment Station in Chihuahua on August 13 as our SRM representative there. Don