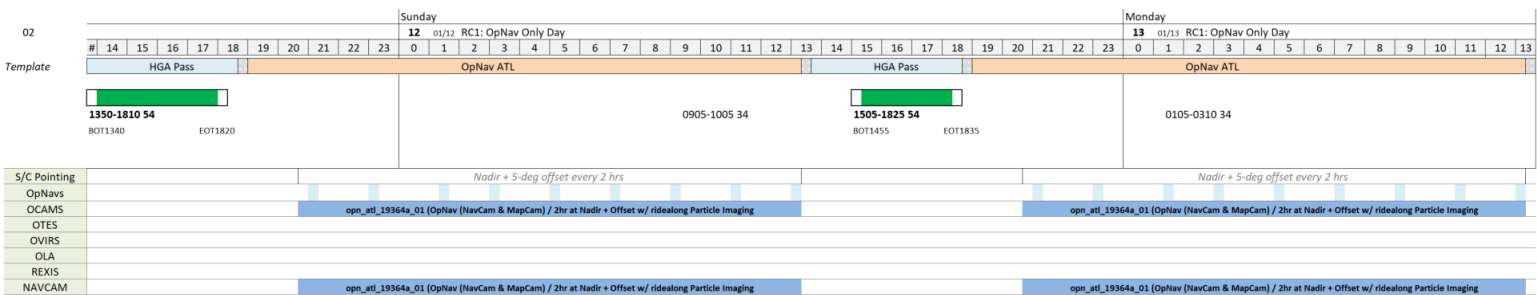
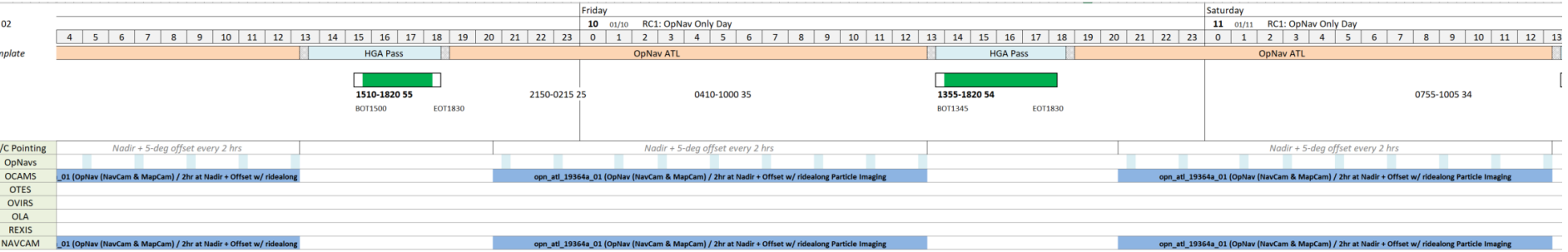
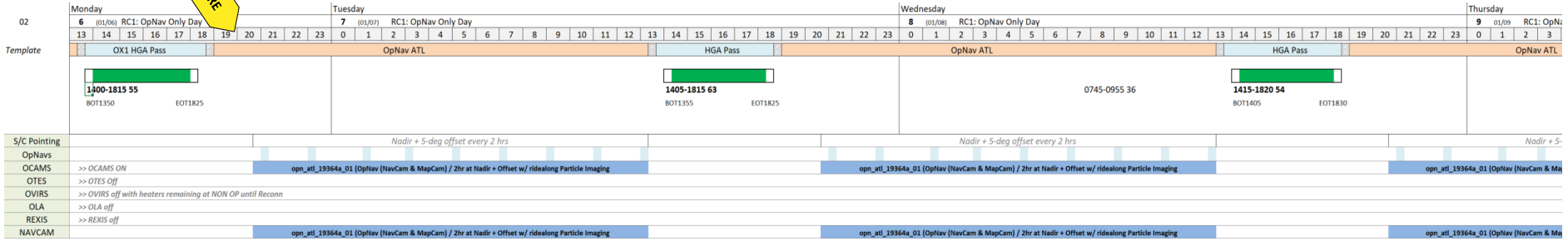


Transition to Recon B: OpNavs (NavCam and MapCam) with Ride-along Particle Imaging WOY 02

We are HERE



- Mission Statistics as of 12/18/19 (L+1196 days)
- Earth Range = 272,000,000 km (1.82 AU) (↓)
 - Sun Range = 169,000,000 km (1.13 AU) (↓)
 - Bennu Range = 1.1 km (Orbit-R frozen orbit)
 - Sun-Probe-Earth Angle = 28.3 deg (↓)