

OSIRIS-REx

Asteroid Sample Return Mission



Project Science Report

Jason Dworkin
Joe Nuth
Lucy Lim





IN DIRECTED MISSIONS LIKE LRO

- The Project Scientist is :
 - The scientific conscience of the project
 - The voice of the science team
 - The friend and confidant of the project manager
 - The explainer of engineering reality
 - The ringmaster of scientific meetings
 - The facilitator of hard-choice discussions
 - The enforcer of the 3-line whip
 - The face of the mission
 - The fall guy

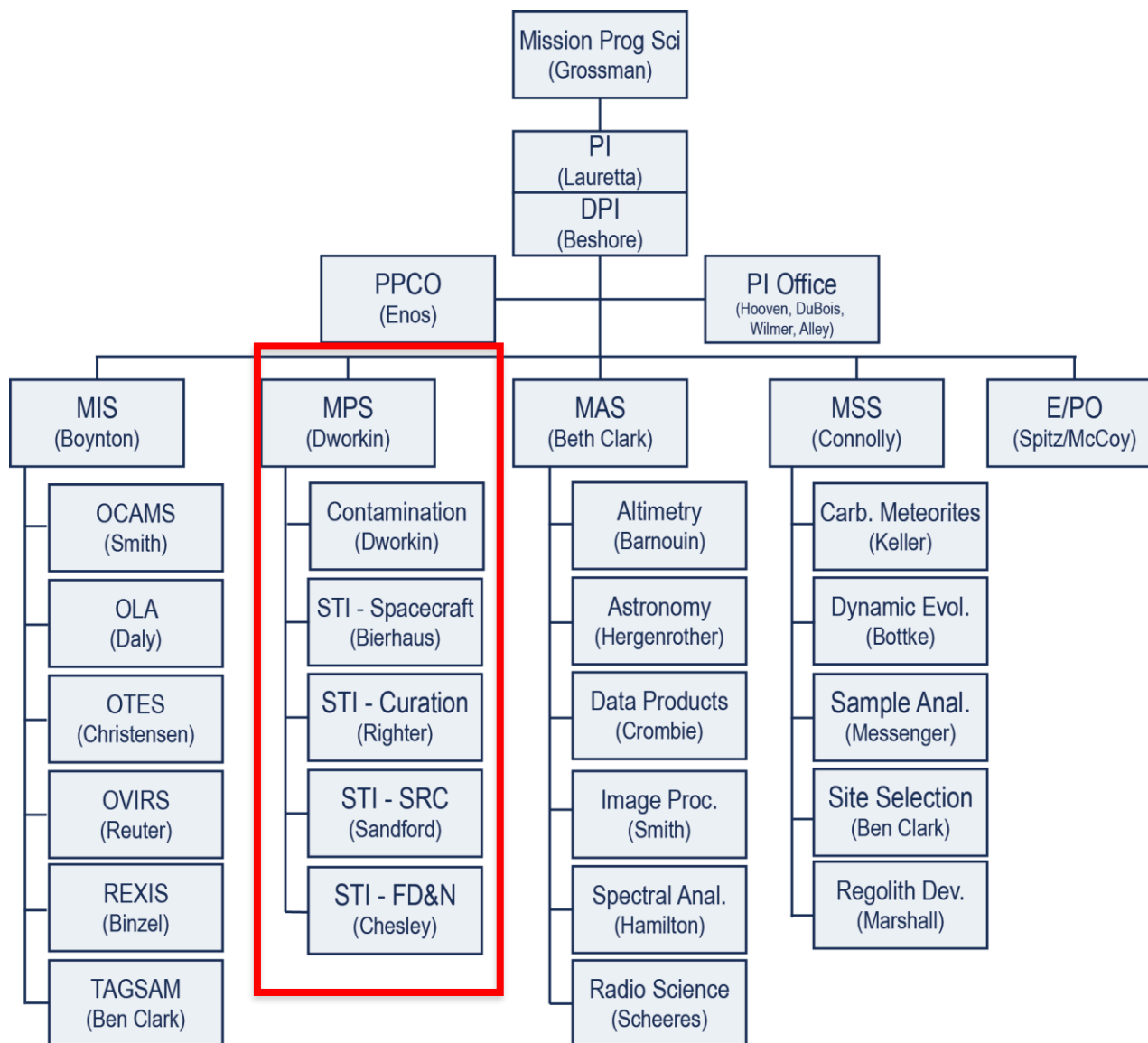


PI-LED MISSIONS LIKE OSIRIS-REx

- The Project Scientist is :
 - ~~The A scientific conscience of the project~~
 - ~~The voice of the science team~~
 - The friend and confidant of the project manager and PI
 - The explainer of engineering reality
 - ~~The ringmaster of scientific meetings~~
 - ~~The A facilitator of hard-choice discussions~~
 - ~~The enforcer of the 3-line whip~~
 - ~~The face of the mission~~
 - The fall guy
 - Loyal opposition to the PI

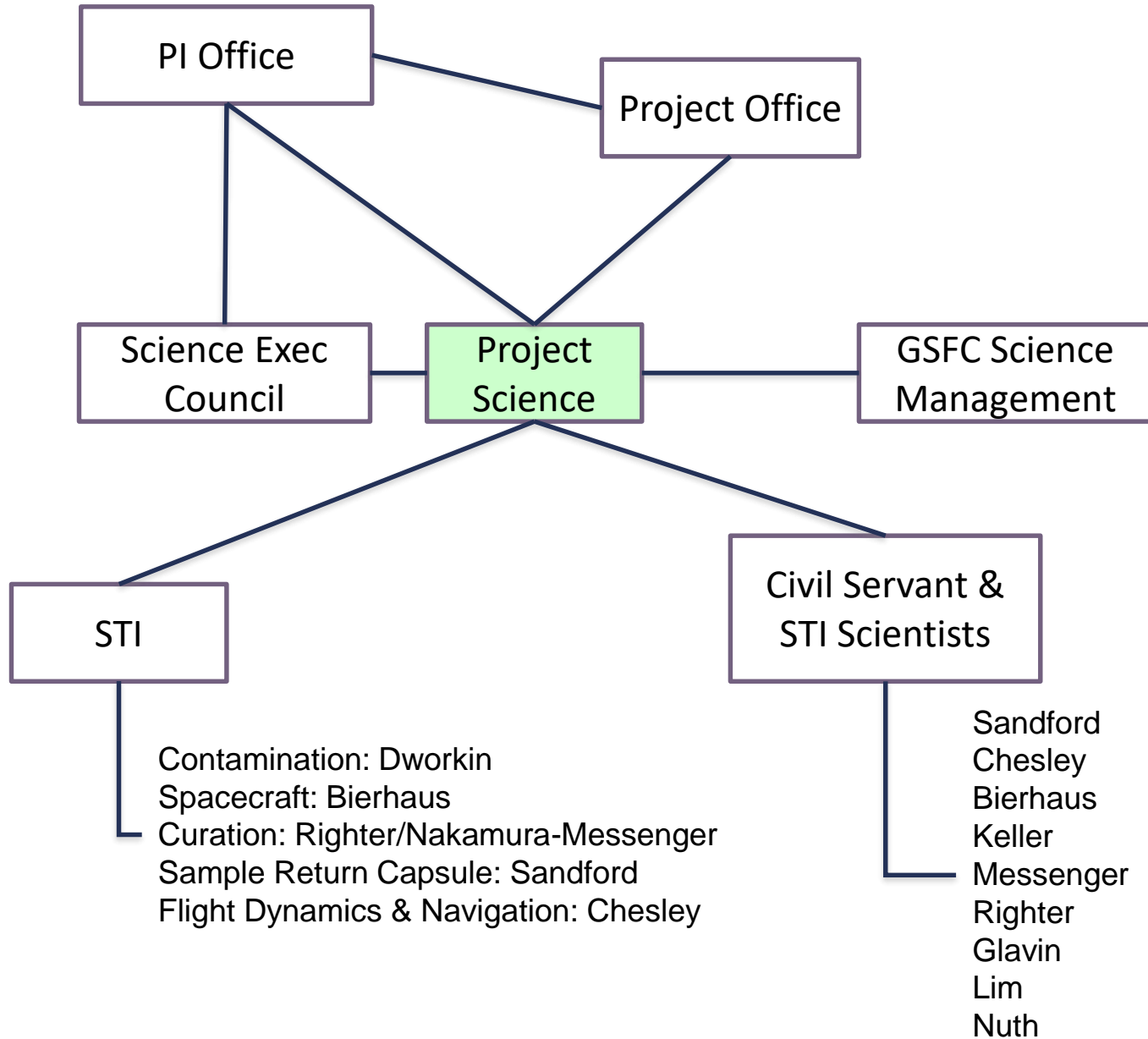


WBS 4 ORGANIZATION





INTERFACES TO OTHER ELEMENTS





LISTENS AND PARTICIPATES

Project Science Participates in:

Weekly Project Office Staff meeting

Weekly PI/Project Staff meeting

Weekly Project Status meeting

Weekly PI/Project/NFPO meeting

Weekly GSFC-690 report

Monthly Mission Status Review (MSR)

Monthly Mission Management Review (MMR)

Monthly Business meeting

Monthly Science Executive Council meeting

Monthly PI tagup

Monthly GSFC-600 tag-up

Risk Management Board

Change Control Board

Working Group Meetings

Project Reviews (SRR, SDR, MDR, etc.)

& Other Duties as Required





ASKS QUESTIONS

To explore inefficiencies, group-think, outside-the-box solutions

To be able to communicate engineering/managerial realities

To be able to communicate scientific necessity

To know who to ask or refer others for deeper explanations



DIVISION OF (1 FTE OF) LABOR

Project Scientist: **Jason Dworkin**

Expertise: organics, contamination, astrobiology

Serves: SciExec, Project reviews, some WGs

Deputy Project Scientist: **Joe Nuth**

Expertise: solar system formation, dust, NASA politics

Serves: Alternate project reviews, some WGs

Assistant Project Scientist: **Lucy Lim**

Expertise: asteroid observations, spectroscopy, planetary science

Serves: Instrument reviews, some WGs



ACTIVITIES AND CONCERNS

- Independently explored the effect of trades and descopes taken on science objectives
- Embedded in Project Office
- Explored contamination monitoring devices
- Communicated several concerns (and compliments) to PI and PM for monitoring and resolution