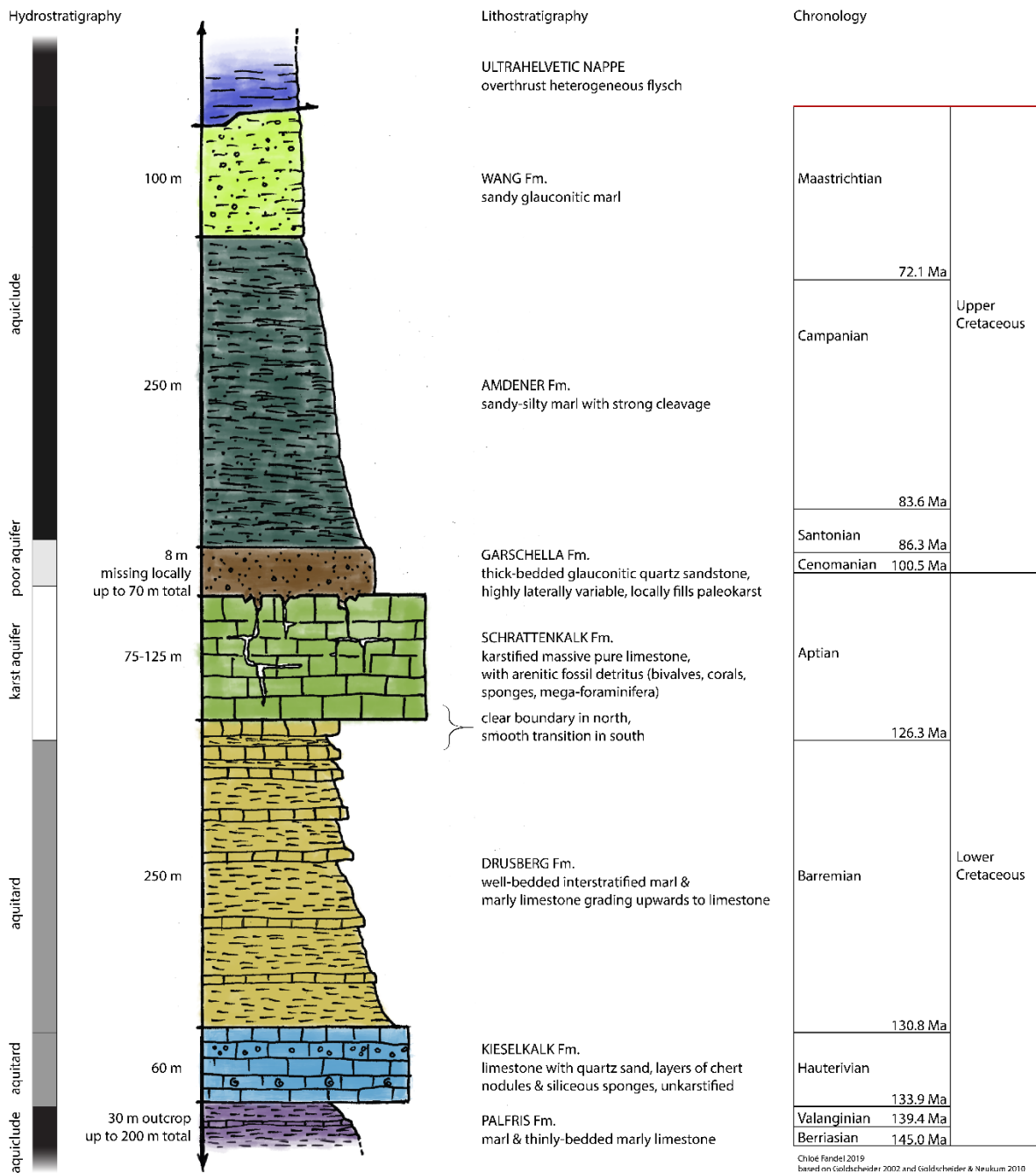


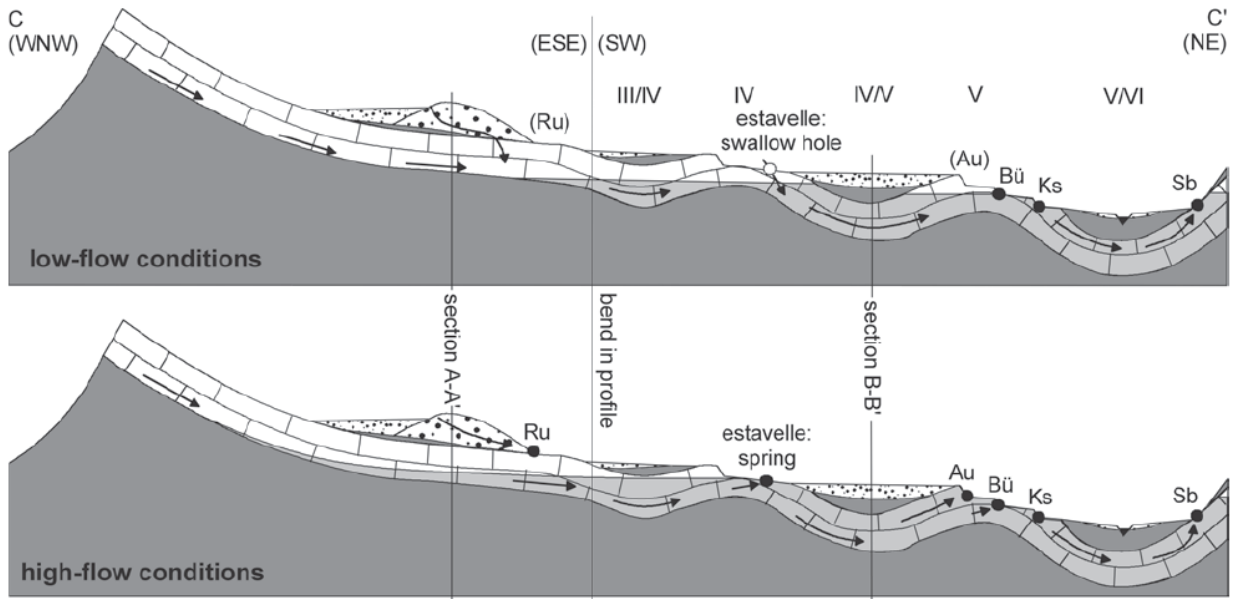
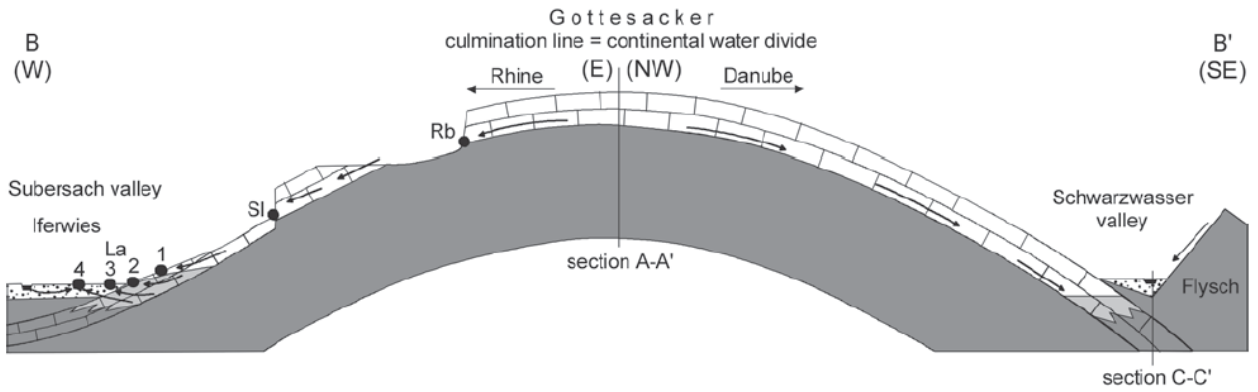
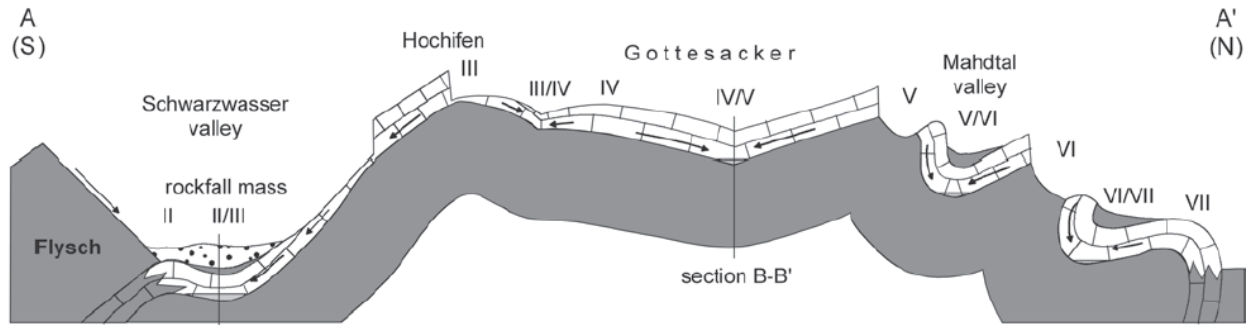
Gottesacker karst system stratigraphy (Helvetic Säntis nappe)



Important springs (after Goldscheider 2005)

Abbreviation	Name	Altitude [m]	Discharge [L/s]	Aquifer type
Ru	Resurgence (upper)	1280	0-2500	Rockfall
Rl	Resurgence (lower)	1280	6-70	Rockfall
QE	Estavelle	1120	-500-4000	Karst
QA	Aubach spring	1080	0-6000	Karst
Bu	Bürgermeister spring	1040	40	Karst
Ks	Kesselschwand spring	1050	15	Karst
Sb	Sägebach spring	1035	150-2000	Karst
Bo	Bottom spring in Breitach	980	200	Karst

Schematic cross-sections (after Goldscheider 2005)



Legend for all generalised hydrogeological sections:

Schraffenkalk karst aquifer

- | | | |
|----------------------------|-----------------------------|--------------------|
| unsaturated zone | Quaternary deposits | karst spring |
| saturated zone | rock fall mass | proved flow path |
| zone of low karstification | low permeability formations | number of the fold |

Location of the sections

