

# Perspectives of People with CF and Caregivers Regarding Medication Access and Telehealth in CF Care During The COVID-19 Pandemic

Hanna Phan<sup>1,2,3,4\*</sup>, Elizabeth Hall-Lipsy<sup>3</sup>, Elizabeth Vuong<sup>3,4</sup>, Kathryn McCulley<sup>3,4</sup>, Kalia Anderson<sup>3,4</sup>, Amanda Sharpe<sup>4</sup>, Anne Bowen<sup>4</sup>



<sup>1</sup> University of Michigan, College of Pharmacy; <sup>2</sup> Michigan Medicine, C.S. Mott Children's; <sup>3</sup> University of Arizona, College of Pharmacy, <sup>4</sup>University of Arizona Pediatric Pulmonary Center  
\*Previously associated at these institution(s) at the time during part of study



## BACKGROUND

- In the context of an international pandemic, social distancing and quarantine have unknown and possibly substantial effects on medication access and health care delivery for persons with CF
- Understanding factors associated with accessibility to CF medications during the COVID-19 pandemic may help inform the CF community in future approaches to health care and medication access.

## SPECIFIC AIMS

- Describe CF medication access before and during the COVID-19 pandemic with regards to types of, access to, and supply of CF guideline-recommended medications.
- Evaluate perceptions of possible medication shortages and adherence to medications during the pandemic.
- Describe modalities, preferences, and perceptions of CF telehealth.

## METHODS

**Design:** deidentified electronic survey study (6/24/2020-7/15/2020)

**Survey tool:** developed by an interprofessional team representing pharmacy, psychology, public health, and local CF patient/family council via Qualtrics® with skip/branch logic, with multiple choice and Likert scale items

**Population:** adults with CF and caregivers of persons with CF (all ages) from:



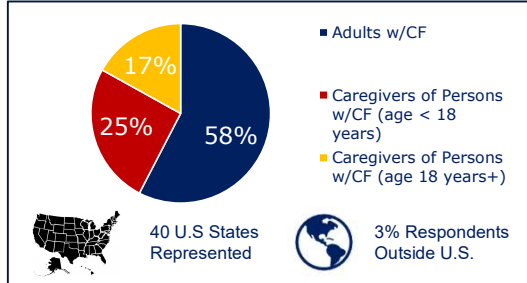
## Data Collection:

- Demographics
- Items focused on perceptions of medication access and use before and during the pandemic; telehealth service availability and use

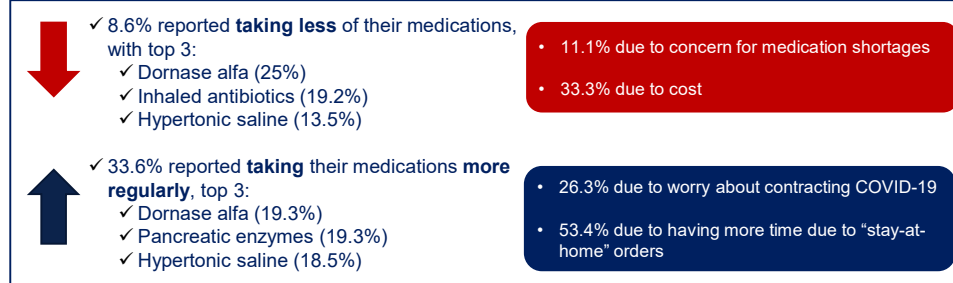
**Statistical Analysis:** descriptive statistics

## RESULTS

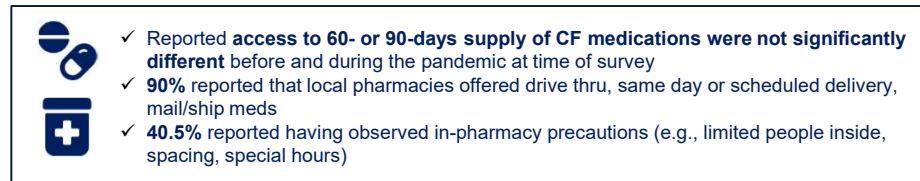
**Figure 1. Types of Survey Participants (N=342)**



**Figure 2. Reported Medication Use (N=327)**



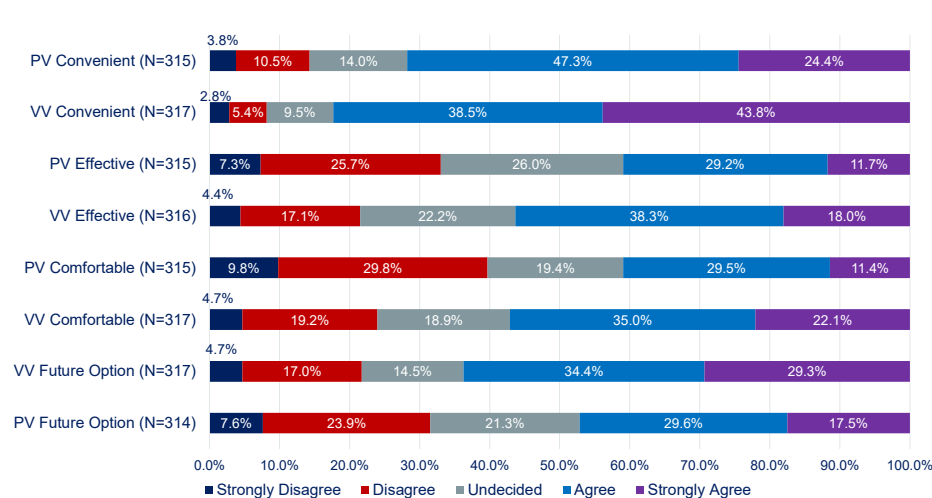
**Figure 3. Reported Medication Access (N=261) and Local Pharmacy Services (N=296)**



**Figure 4. Reported Postponed Lab Draws (N=313) and Respiratory Cultures (N=315)**



**Figure 5. Perspectives regarding convenience, effectiveness, comfort and future option of video (VV) or phone (PV) visits in CF care**



## CONCLUSIONS

- The COVID-19 pandemic had wide-reaching effects on CF care including reported change in medication use due to various reasons
- Telemedicine was relatively widely accepted with opportunities to improve care delivery with regards to lab blood draws and respiratory cultures
- Although this pandemic is far from over, our results offer a new lens from which to view the potential opportunities and challenges in care for people with CF and their caregivers

## FUTURE DIRECTIONS

- Explore opportunities in telehealth, including pharmacists' contributions, in CF care
- Learn from opportunities and challenges in improving care and outcomes in the setting of a pandemic

## LIMITATIONS

- Open social media survey, unknown total possible respondents to determine response rate

## ACKNOWLEDGEMENTS

The University of Arizona College of Pharmacy Health Disparities Grant, Arizona Area Health Education Center (PI: Phan); Health Resources and Services Administration (HRSA) of the U.S. Department of Health and Human Services (HHS) Grant T72MC00012; CysticLife.org; Cystic Fibrosis Foundation; Community Voice, Bethesda, MD. Previously presented at the 2021 North American Cystic Fibrosis Conference (November 2021).