

Tucson Spaceport Details

2025

Trent Tresch

The Tucson Spaceport is owned by Pima County in Tucson Arizona. It is located south of the International airport (TUS) at **32°05'11.5"N 110°56'40.6"W** and is built specifically for the launch of high-altitude balloons and their payloads. This document outlines the space port maps, known details and operational contacts. As of the creation of this document,

Worldview Enterprises is under contract to operate the space port. All flight projects must be reviewed by the contracted operation company and Pima County. As Worldview Enterprises is also a private organization with government contracts, it is unclear whether foreign nationals are permitted onsite. This is a question as per any proposed project. After the launch of any payload from the pad, flight will be ascending thorough class A airspace and require FAA coordination.

On site, the Worldview building has external bathroom facilities that may be potentially used with approval. Access to the launch pad can be found on both the North and South sides of the facility however the main entrance is the south gate. Access is completely paved. Proof of insurance is required when requesting access to the launch pad. Operations may require an [FAA certificate of waiver or authorization](#) form 7711-1.

Pima County Contact:

Name: Heath Vescovi-Chiordi

Address: 201 N Stone Ave, 2nd Floor, Tucson, AZ 85701-1207

Phone: (520) 724-8450

Website: <https://www.pima.gov/2229/Economic-Development>

Worldview Contact:

Name: Aaron Farber

Address: 1805 E Aerospace Pkwy, Tucson, AZ 85756

Phone: (520) 745-4445

Website: <https://www.worldview.space/>

Tucson Airport Contact (KTUS):

Tower FQ: 118.3 and 119.0

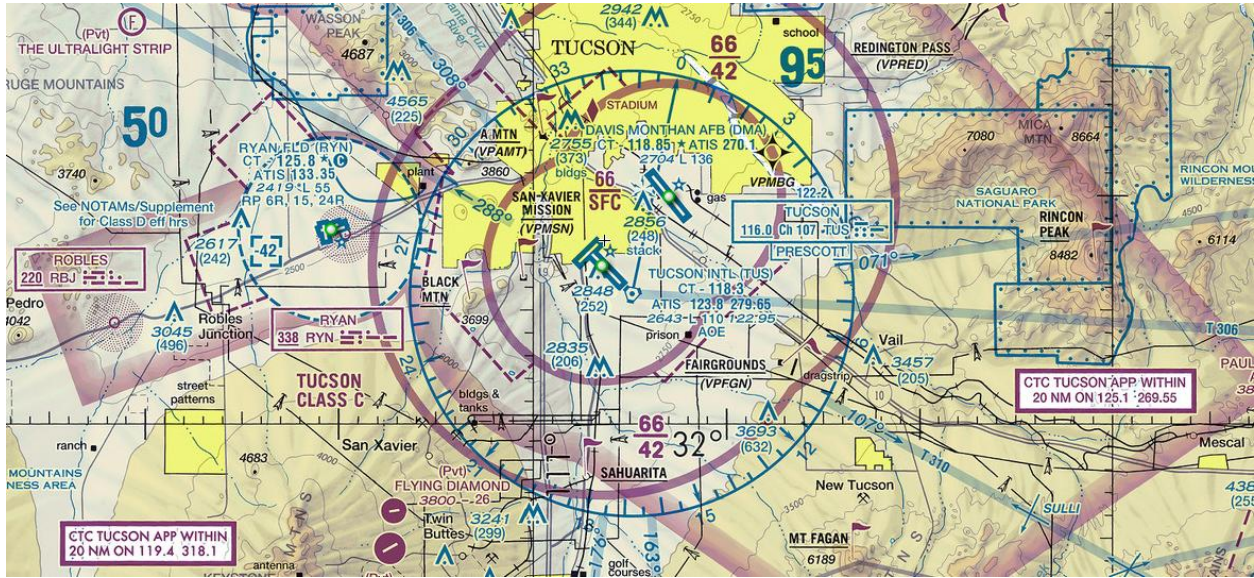
Ground FQ: 120.025

WX ASOS: PHONE 520-355-5542

FAA FSDO and Service Area Contact:

- https://www.faa.gov/about/office_org/field_offices/fsdo
- https://www.faa.gov/about/office_org/headquarters_offices/ato/service_units/mission_support/sc

Tucson Sectional



Tucson Spaceport located 32°05'11.5"N 110°56'40.6"W. Northwest and South entrances shown with red arrows. External building bathrooms circled in green.

Site Photos



South gate entrance.



South gate call system. Reads, "Push call button for entry, if there is no response after a brief wait, please call 530-241-5773 for facility management"



Two external bathrooms.



Road out to launch pad looking north.



Launch pad looking north. Entire pad is about 700ft in diameter.



Looking back to the Worldview facility.



Northwest entrance gate (not typically used).