

Lunar Hammer Engineered Drawing

Trent Tresch
2026

This is a lunar hammer design based off the Apollo hammer to chip a sample of rock off a larger rock or to drive core tubes into the lunar soil. When attached to an extension handle, the hammer could also be used to dig surface furrows.

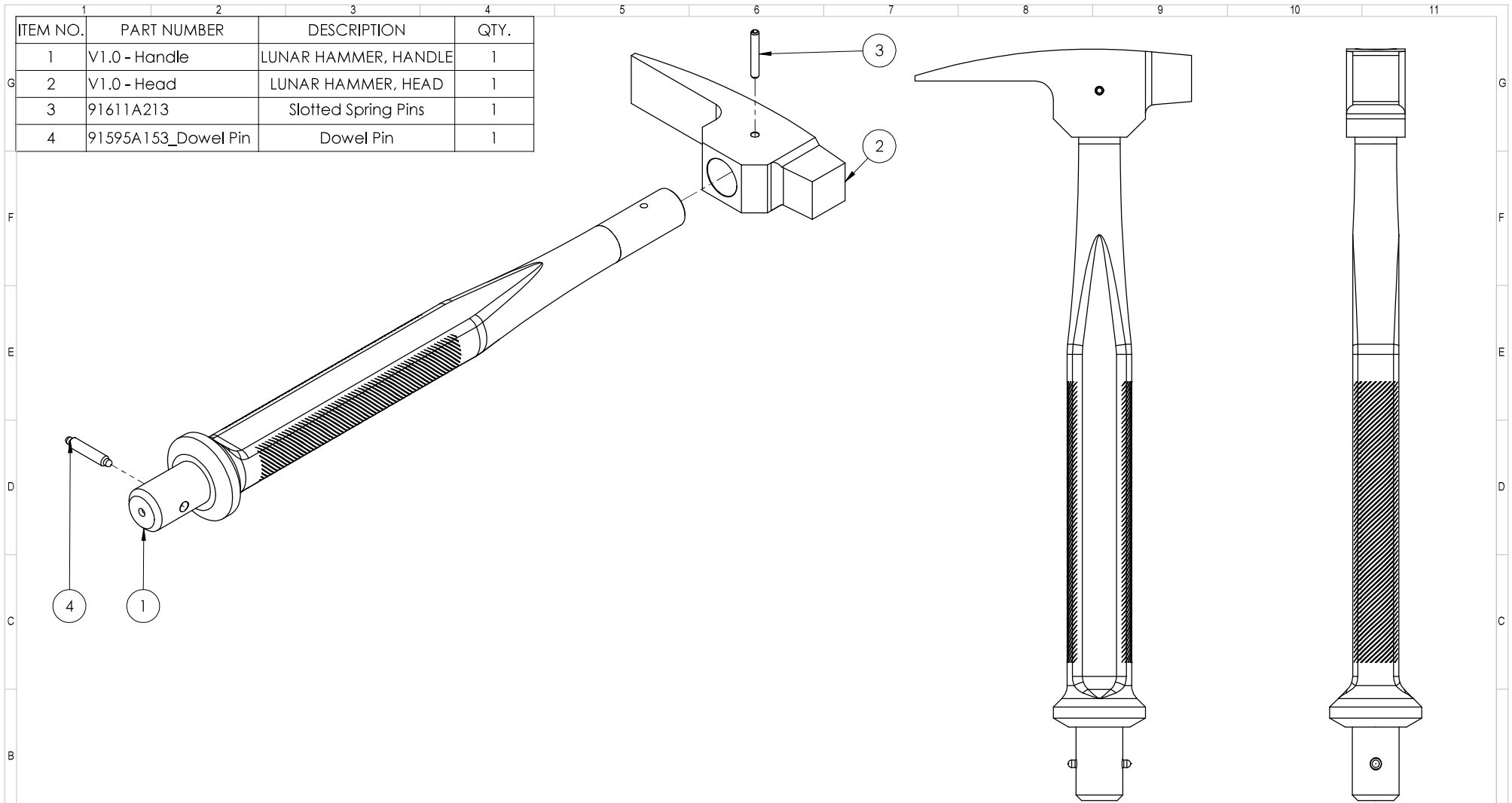
This particular style of hammer was used for training during Apollo. The purpose of this file is to support future developments in lunar geology and tool design.

Materials

Handle: Aluminum

Head: Steel

ITEM NO.	PART NUMBER	DESCRIPTION	QTY.
1	V1.0 - Handle	LUNAR HAMMER, HANDLE	1
2	V1.0 - Head	LUNAR HAMMER, HEAD	1
3	91611A213	Slotted Spring Pins	1
4	91595A153_Dowel Pin	Dowel Pin	1



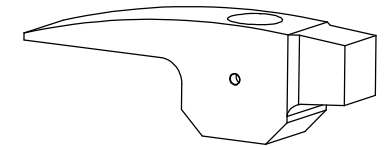
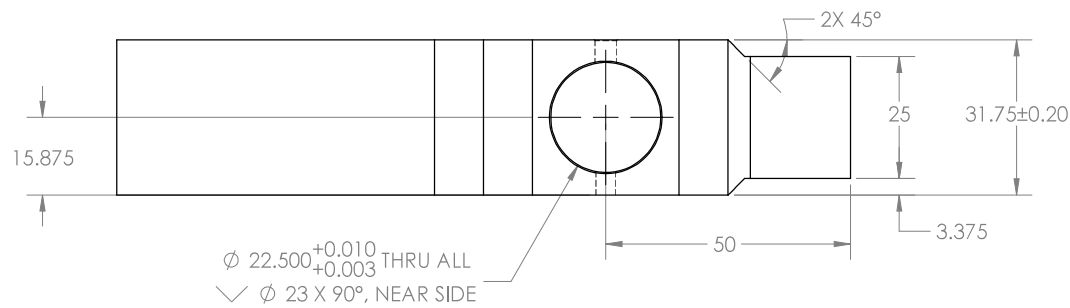
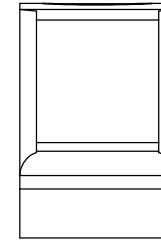
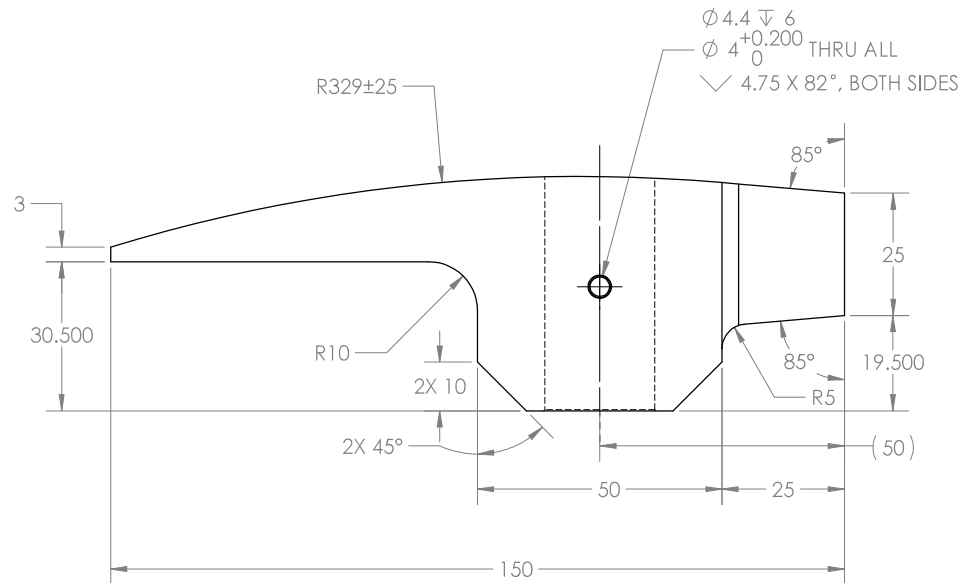
- NOTES:
1. ALIGN HEAD WITH FLATS ON HANDLE
 2. DRILL HEAD RETAINING HOLE AFTER PRESSING HEAD ON HANDLE
 3. WEIGHT OF TOTAL ASSEMBLY: 3.4LBS (1540 grams)

REV.	DESCRIPTION	DATE	APPROVED
REVISIONS			

NAME	DATE	DRAWN AS SAE: DIM. & TOL. = INCH
DRWN BY		GENERAL TOLERANCES:
CHKD BY		DECIMALS
ENG APPR.		1/32 ±0.0031
MODEL REV.	SCALE: 1:2	X.X ±0.03
SHEET SIZE: B	SHEET 1 OF 1	X.XX ±0.01
		X.XXX ±0.005
		ANGLES ±5°
		FINISH Ra 125 min
		DIMS (X) ARE REFERENCE

PART NO.:	V1.0 - LUNAR HAMMER
DESCRIPTION:	LUNAR HAMMER, ASM





NOTES:

1. MATERIAL: AISI 4140 STEEL (ANNEALED)
2. SURFACE FINISH: SANDBLAST FINISH
3. HEAT TREATED: OIL QUENCH & TEMPER TO FINAL HARDNESS 45-50 HRC
4. COATING: TBD
5. WEIGHT: 772.85 GRAMS
6. DEBURR AND BREAK ALL EDGES

NAME	DATE	DRAWN AS SAE: DIM. & TOL. = mm	
DRWN BY		GENERAL TOLERANCES:	
CHKD BY		ALL DIMS	±.1
ENG APPR.		ANGLES	±.5°
MODEL REV.	SCALE: 1:1	FINISH	Ra 125 min
SHEET SIZE: B	SHEET 1 OF 1	DIM (X) ARE REFERENCE	
		PART NO.: V1.0 - Head	

REV.	DESCRIPTION	DATE	APPROVED
REVISIONS			

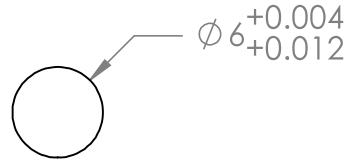
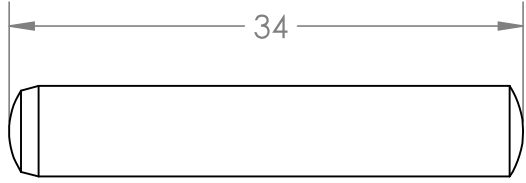


DESCRIPTION: LUNAR HAMMER, HEAD

VENDOR			VENDOR #	
MCMaster CARR			91595A153	

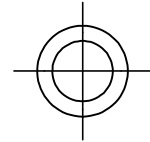
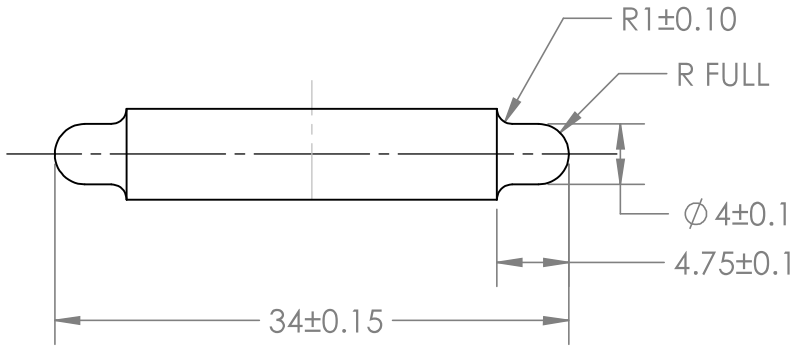
SPECIFICATIONS:

- DOWEL PIN (MODIFIED)
- 4140 ALLOY STEEL
- 6mm DIA (NOMINAL)
- 34mm LENGTH (NOMINAL)
- PART MODIFIED FROM PURCHASED SPEC



AS PURCHASED

☒ SYM



MODIFIED

PART NO.:		NAME		DATE	
91595A153_Dowel Pin		DRWN BY			
DESCRIPTION:		ENG APPR.			
Dowel Pin		CHKD BY			
REV:	SIZE: A	SHEET 1 OF 1	CUST. APPR.		

VENDOR	VENDOR #
MCMASTER CARR	91611A213

SPECIFICATIONS:

- SPRING PIN
- 1050-1095 SPRING STEEL
- 4mm DIA (NOMINAL)
- 30mm LENGTH (NOMINAL)



PART NO.:		NAME		DATE	
91611A213_Slotted Spring Pins		DRWN BY			
DESCRIPTION:		ENG APPR.			
Slotted Spring Pins		CHKD BY			
REV:	SIZE: A	SHEET 1 OF 1	CUST. APPR.		